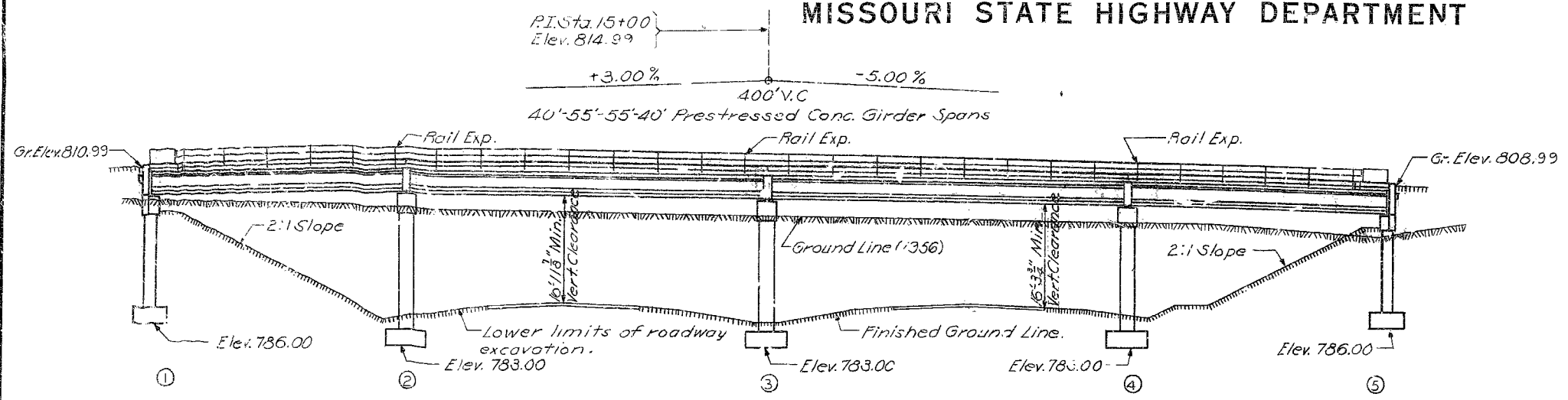


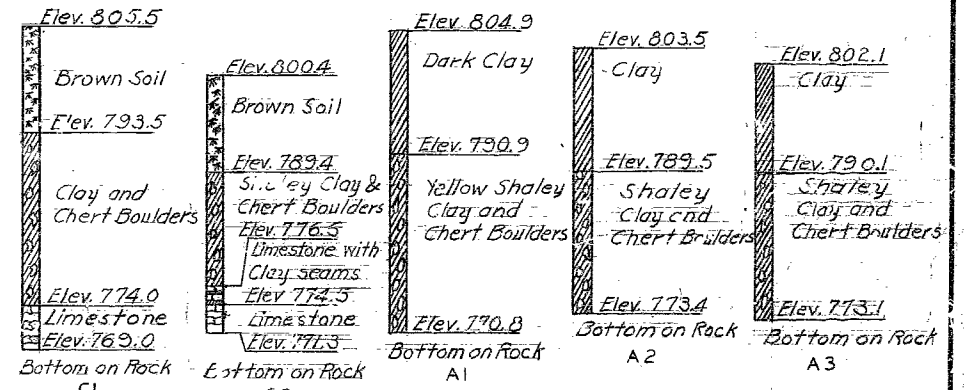
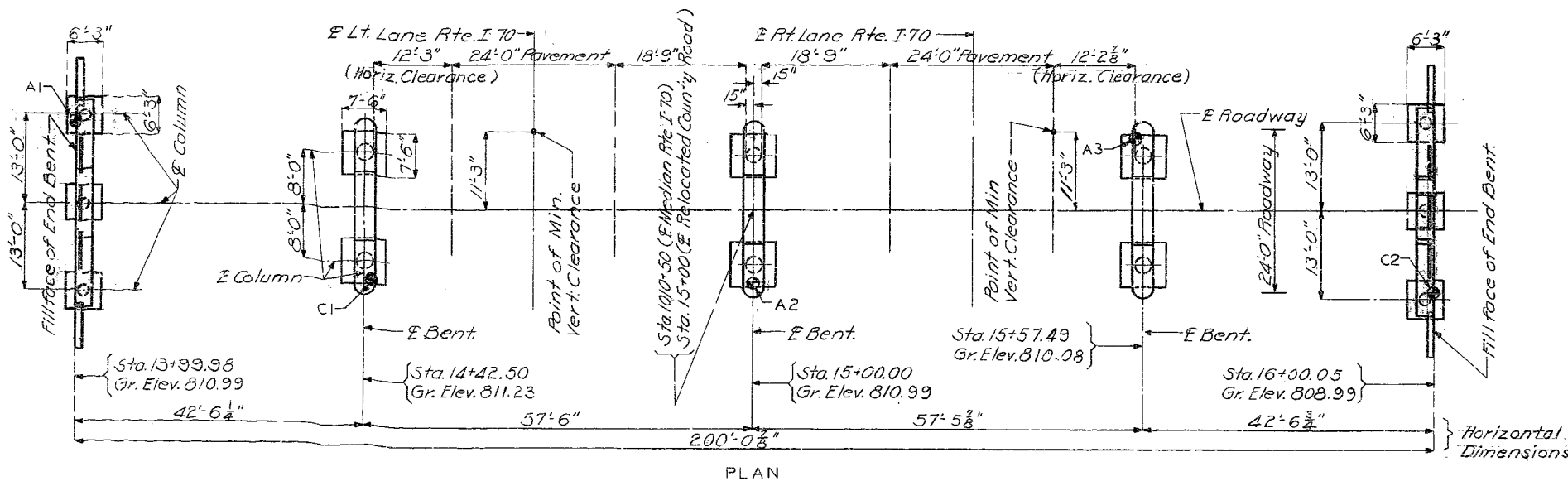
MISSOURI STATE HIGHWAY DEPARTMENT

FED. ROAD DIST. NO.	STATE NO.	FED. AID PROJ. NO.	FISCAL YEAR	SHEET NO.	TOTAL SHEETS
5			1961	53	



Note: Footings shall be placed on material satisfactory to the Engineer and capable of supporting at least 5000 ^{lb}/_{ft}². Footings shall not be placed higher than elevations shown on these plans.
 Bearing pressure of 5000 ^{lb}/_{ft}² used in design of footings.

GENERAL NOTES:
 For specifications and notes pertaining to prestressed members refer to sheet No. 6 of 7.
 Design Specifications A.A.S.H.O. 1957
 Loading H15-44 (Future Wearing Surface 15" ^{thick})
 Reinforcing Steel Stress 20,000 ^{psi}/_{in}²
 Structural Steel Stress 18,000 ^{psi}/_{in}²
 Concrete Class B Stress 1,200 ^{psi}/_{in}²
 Concrete Class B1 Stress 1,600 ^{psi}/_{in}²
 Concrete for Superstructure, except for girders, shall be Class B1 (Air-Entrained).
 Concrete for Substructure shall be Class B (Air-Entrained).
 Paint: Shop, none; Field, contact surfaces of bolted field connections, steel to steel, one coat of red lead and surfaces of rail posts in contact with concrete, three coats of red lead. All other exposed surfaces first coat red lead, second coat brown, third coat aluminum. Payment for cleaning and painting such surfaces shall be included in price bid for items painted.
 Where joint filler is specified on the plans it shall conform with the requirements of Section 157.2.4 of the Standard Specifications.
 Permits must be obtained for all truck loads over legal length.
 Qualification of welding operators will be required.



Note: Soundings C1 & C2 taken with a Core Drill. Soundings A1, A2 & A3 taken with an Auger

LOG OF SOUNDINGS

S.B.M. 78 Elev. 808.65 Nail in side 12" Elm, 110' Left Sta. 1011+50

BRIDGE: RELOCATED COUNTY ROAD UNDERPASS

STATE ROAD FROM EAST OF ROUTE 65 TO COOPER CO. LINE ABOUT 11.0 MILES S.W. OF BLACKWATER PROJECT NO. I-70-2(10) (RTE. I-70) STA. 1010+50

SALINE COUNTY

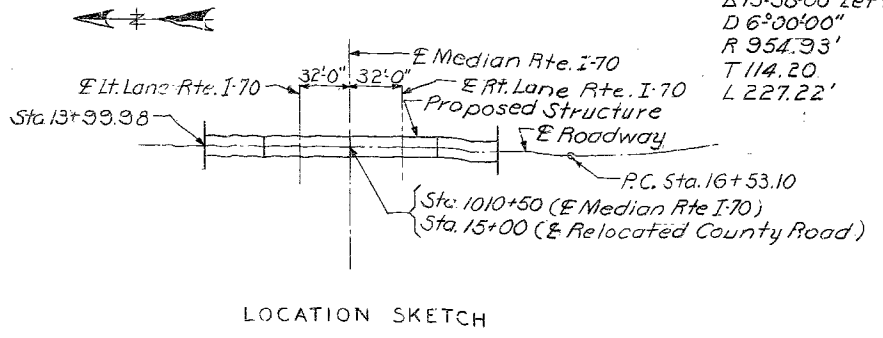
SUBMITTED BY: *D. R. Jenkins* DATE: 2-11-1961
 APPROVED BY: *J. J. Corbett* DATE: 8-11-1961

CURVE DATA (Relocated Co. Road)

P.T. Sta. 17+67.30
 Δ 13°38'00" Left
 D 6°00'00"
 R 954.93'
 T 114.20
 L 227.22'

Item	ESTIMATED QUANTITIES		
	Substr.	Superstr.	Total
Class 1 Excavation for Structures Cu. Yds.	440		440
Class B1 Concrete Cu. Yds.		156.4	156.4
Class B Concrete Cu. Yds.	123.2		123.2
40' Prestressed Concrete Members Each		8	8
55' Prestressed Concrete Members Each		8	8
Fabricated Structural Carbon Steel Lbs.		13,130	13,130
Reinforcing Steel (Except Prest. Members) Lbs.	16,150	39,780	55,930

Note: All excavation for bridge will be paid for as Class 1 Excavation for Structures.
 Estimated quantity of Class 1 Excavation for Structure includes only amount of excavation below lower limits of roadway excavation.



LOCATION SKETCH

Drawn June 1961 by O.V.S.
 Checked July 1961 by *[Signature]*

Note: This drawing is not to scale. Follow dimensions.

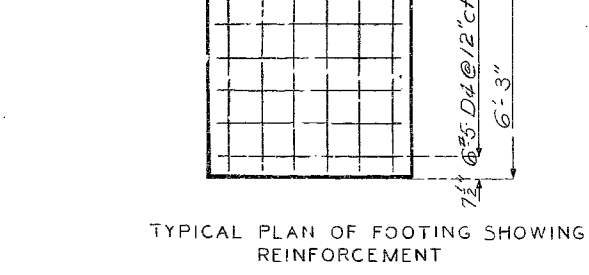
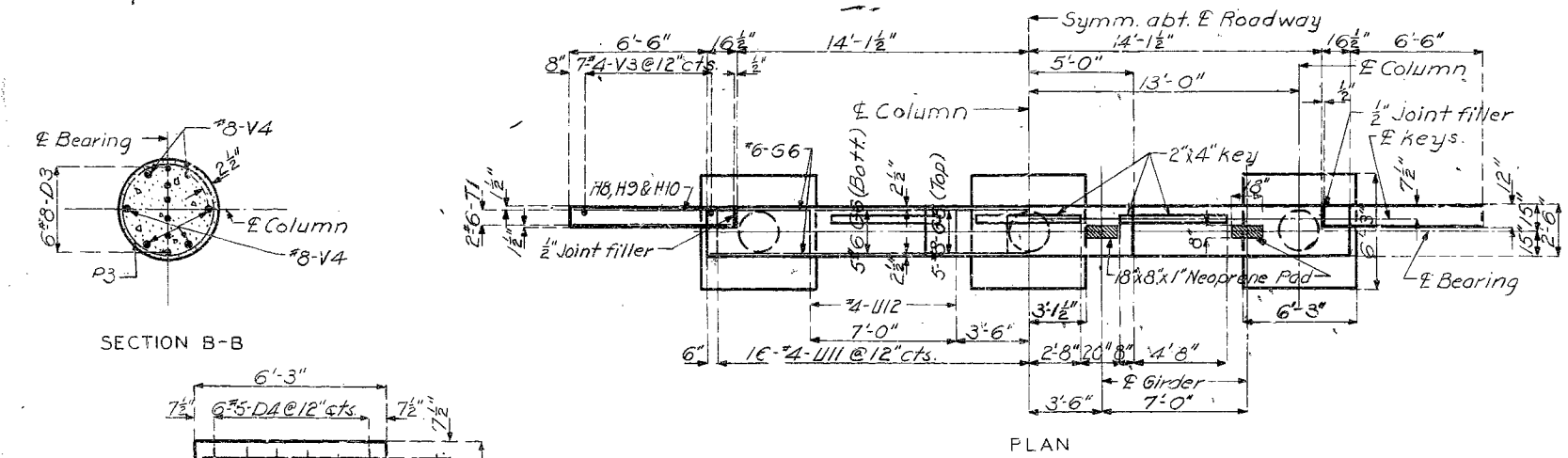
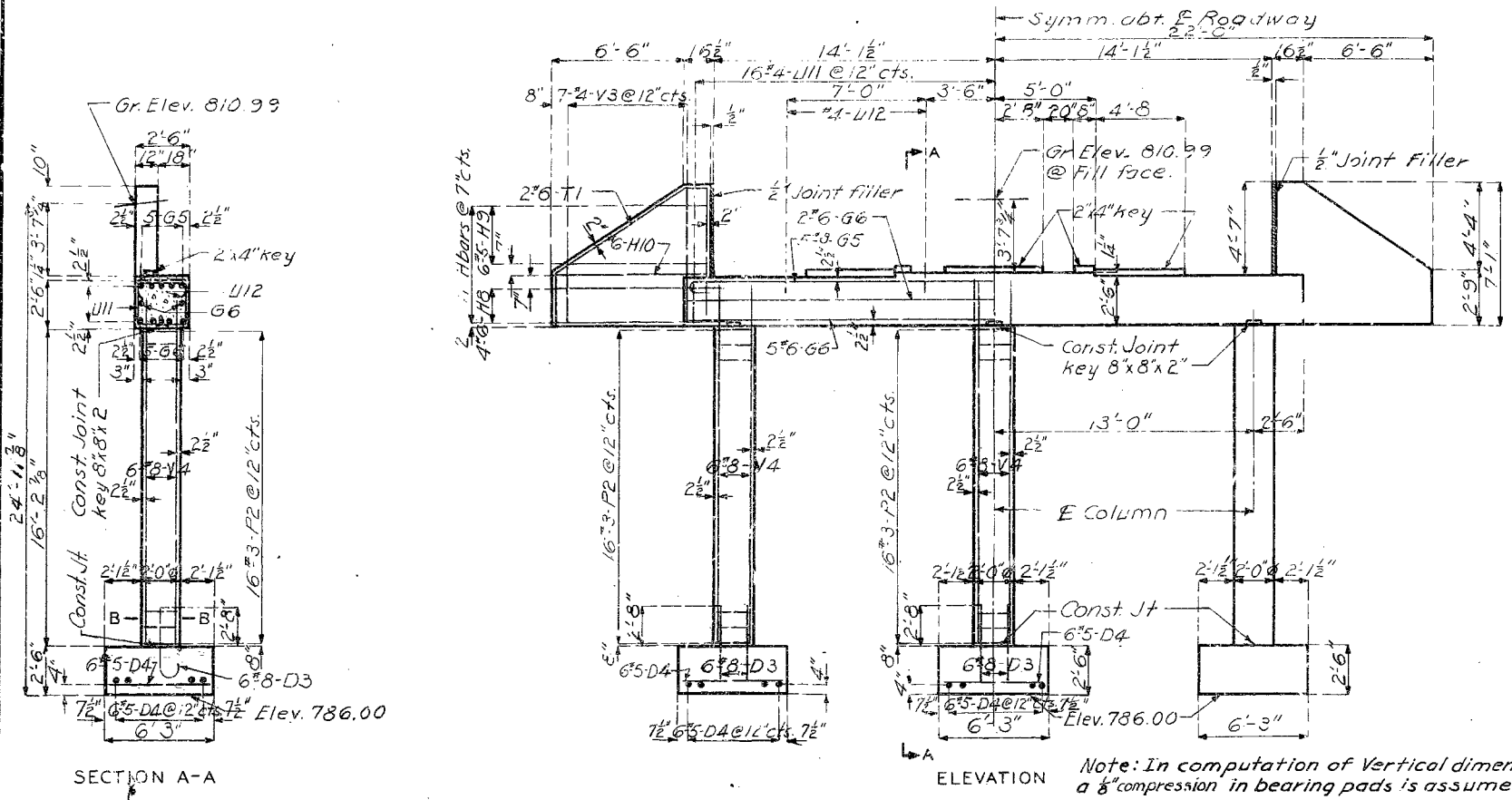
Sheet No. 1 of 7

SEE FINAL PLANS BROWN LINES

STD. 54.00
 A-130

MISSOURI STATE HIGHWAY DEPARTMENT

FED. ROAD DIST. NO.	STATE	FED. AID PROJ. NO.	FISCAL YEAR	SHEET NO.	TOTAL SHEETS
5	MO		19	54	



BILL OF REINFORCING STEEL (Except Prestressed Members)			
No.	Size	Length	Mark Location
Substructure			
End Bent No. 1			
18	#8	5'-6"	D3 Footing
36	#5	6'-0"	D4 "
5	#8	33'-3"	G5 Beam
7	#6	30'-6"	G6 "
8	#6	8'-3"	H8 Wing
6	#5	9'-0"	H9 "
2	#6	7'-6"	H10 "
48	#3	6'-3"	P2 Column
4	#6	17'-9"	T1 Wing
31	#4	9'-9"	U11 Beam
4	#4	3'-3"	U12 "
7	#4	9'-6"	V3 Wing
18	#8	18'-6"	V4 Column
Int. Bents No. 2, 3 & 4			
48	#9	6'-0"	D2 Footing
96	#5	7'-3"	D5 "
9	#9	25'-3"	G1 Beam
21	#9	22'-9"	G2 "
24	#9	11'-3"	G3 "
6	#6	22'-9"	G4 "
112	#3	8'-0"	P1 Column
24	#7	6'-3"	U9 Beam
126	#5	10'-3"	U10 "
32	#9	21'-6"	V1 Col. Bt. 283
16	#9	20'-6"	V2 " Bt. 4
End Bent No. 5			
18	#8	5'-6"	D3 Footing
36	#5	6'-0"	D4 "
5	#8	33'-3"	G5 Beam
7	#6	30'-6"	G6 "
8	#6	8'-3"	H8 Wing
6	#5	9'-0"	H9 "
2	#6	7'-6"	H10 "
42	#3	6'-3"	P2 Column
4	#6	17'-9"	T1 Wing
31	#4	9'-9"	U11 Beam
4	#4	3'-3"	U12 "
7	#4	9'-6"	V3 Wing
18	#8	18'-6"	V4 Column

Bending Sketches & Cutting Diagrams			

BRIDGE: RELOCATED COUNTY ROAD UNDERPASS
 STATE ROAD FROM EAST OF ROUTE 65 TO COOPER CO LINE
 ABOUT 11.0 MILES S.W. OF BLACKWATER
 PROJECT NO. I-70-2(10)(RTE. I-70) STA. 1010 + 50
 SALINE COUNTY

Drawn June 1961 by C.J.S.
 Checked July 1961 by [Signature]

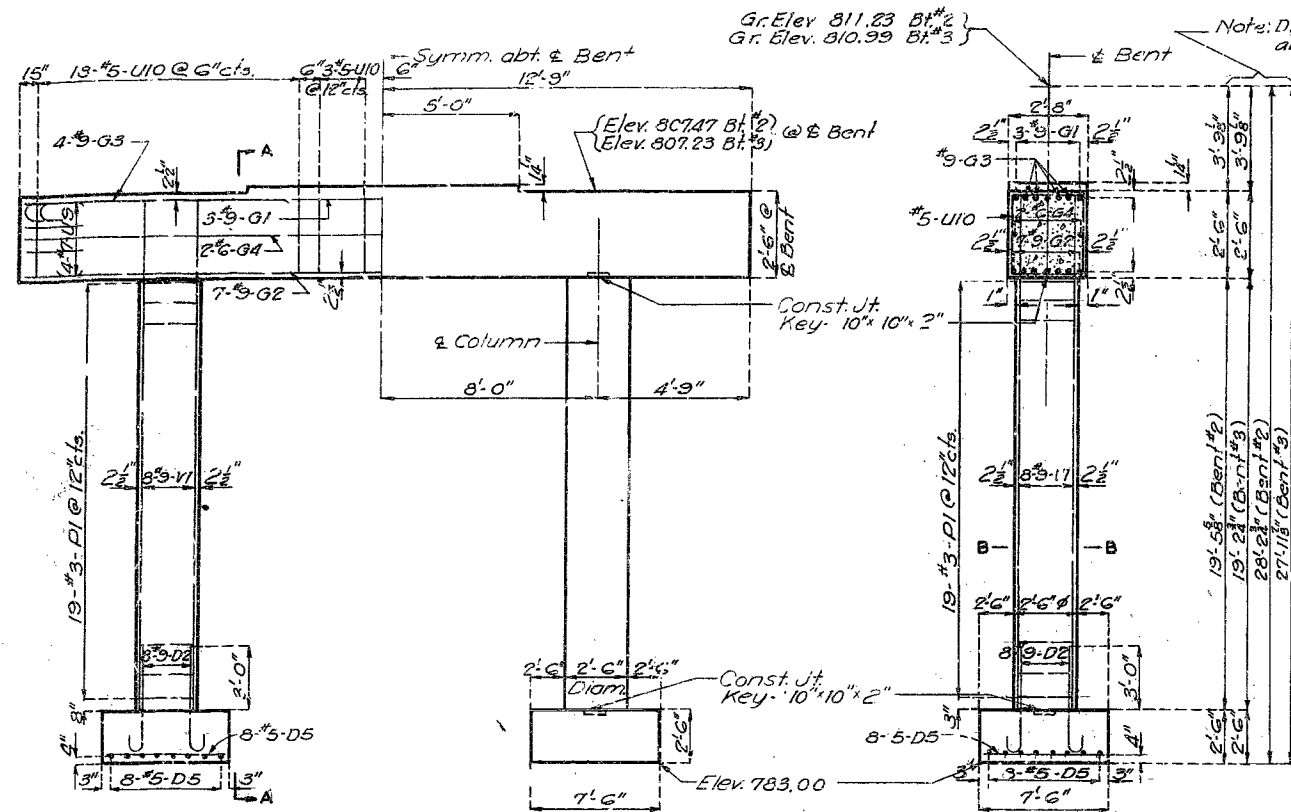
Note: This drawing is not to scale. Follow dimensions.

Sheet No. 2 of 7

A-130

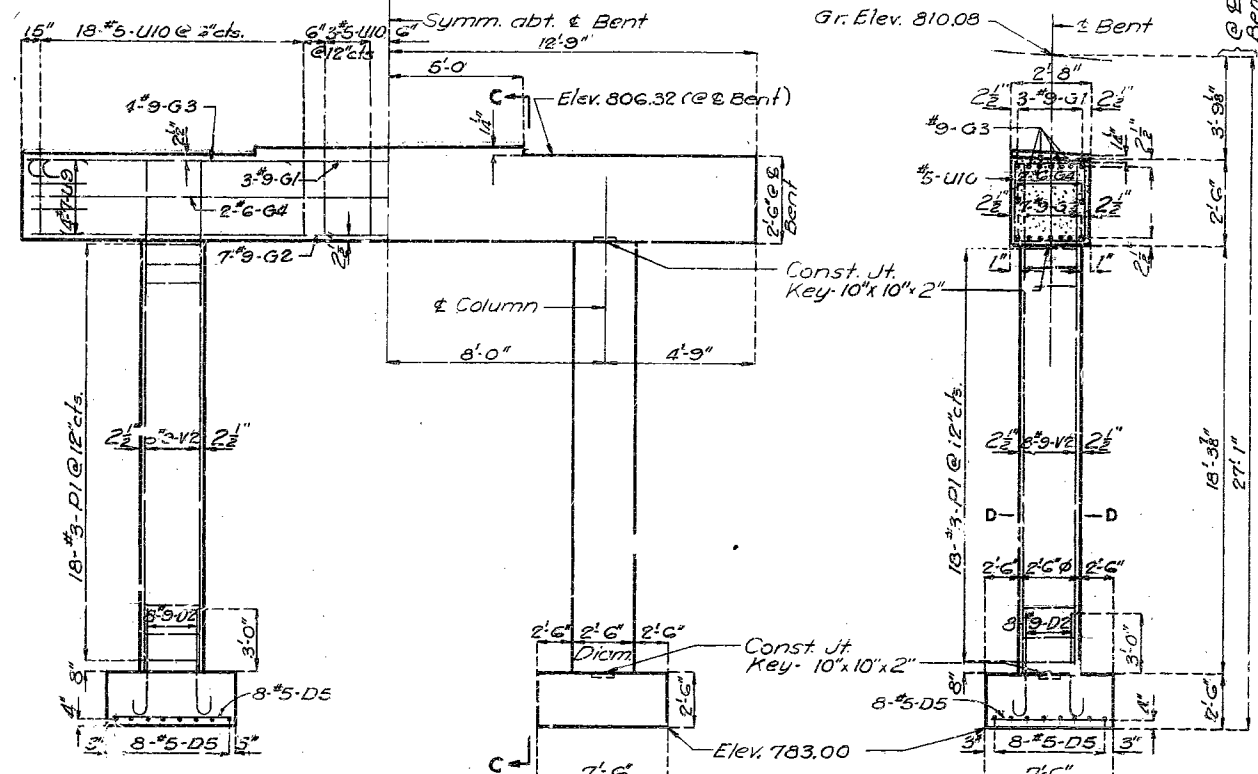
MISSOURI STATE HIGHWAY DEPARTMENT

FED. ROAD DIST. NO.	STATE NO.	FED. AID PROJ. NO.	FISCAL YEAR	SHEET NO.	TOTAL SHEETS
5	NO.	19	55	55	55



ELEVATION

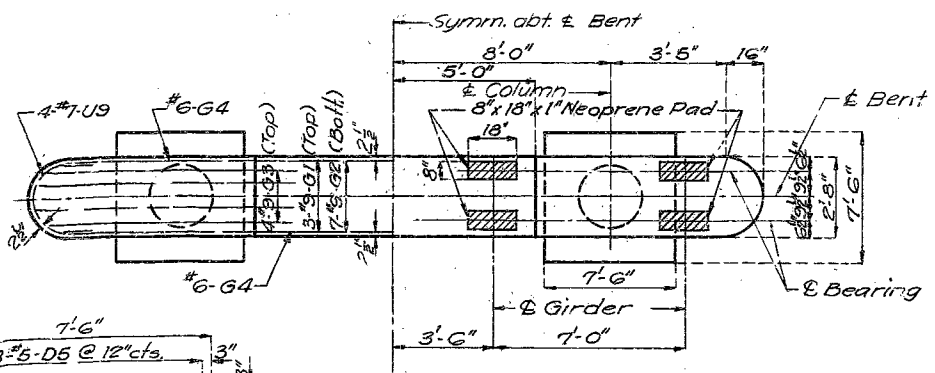
SECTION A-A



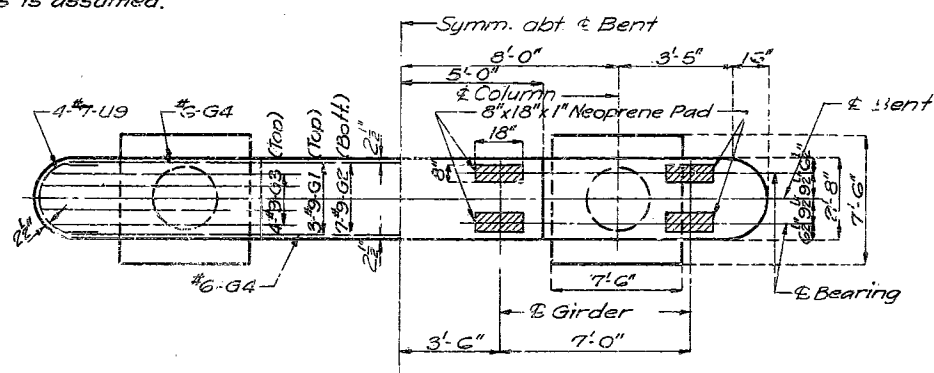
ELEVATION

SECTION C-C

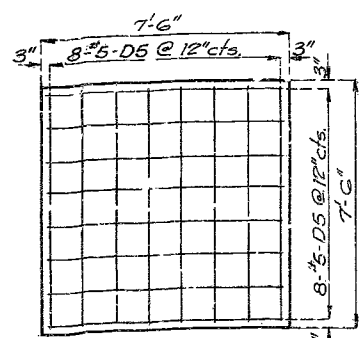
Note: In computation of vertical dimensions a 1/2" compression in bearing pads is assumed.



SECTION B-B



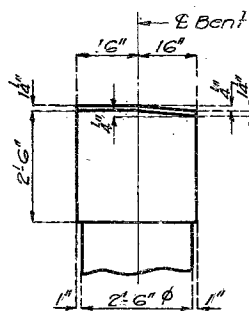
SECTION D-D



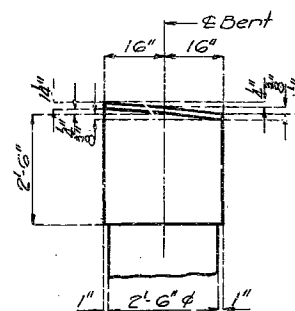
TYPICAL PLAN OF FOOTING SHOWING REINFORCEMENT

PLAN

DETAILS OF INTERMEDIATE BENTS NO. 2 & 3



END ELEVATION BT. NO. 3



END ELEVATION BT. NO. 4

Note: Top of Beam and step of Bent No. 2 to be level.

PLAN

DETAILS OF INTERMEDIATE BENT NO. 4

BRIDGE: RELOCATED COUNTY ROAD UNDERPASS

STATE ROAD FROM EAST OF ROUTE 65 TO COOPER CO. LINE

ABC JT 11.0 MILES S.W. OF BLACKWATER

PROJECT NO. I-70-2(10) (RTE. I-7) STA. 1010+50

SALINE

COUNTY

WISHED

FINISHED

Drawn May 19 61 by O.J.S. & J.H.K.
Checked July 1961 by [Signature]

Note: This drawing is not to scale. Follow dimensions.

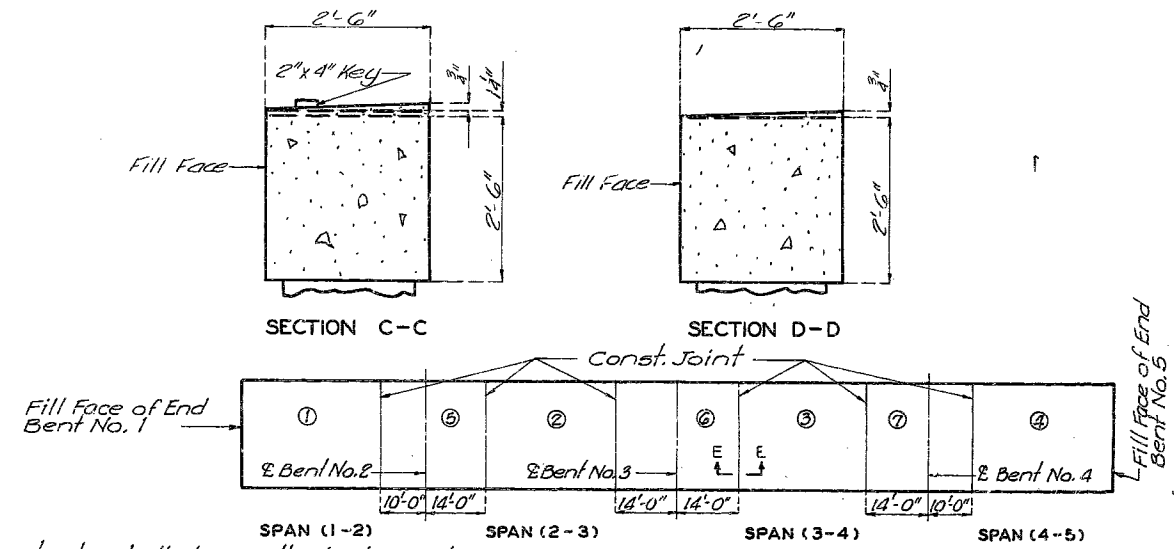
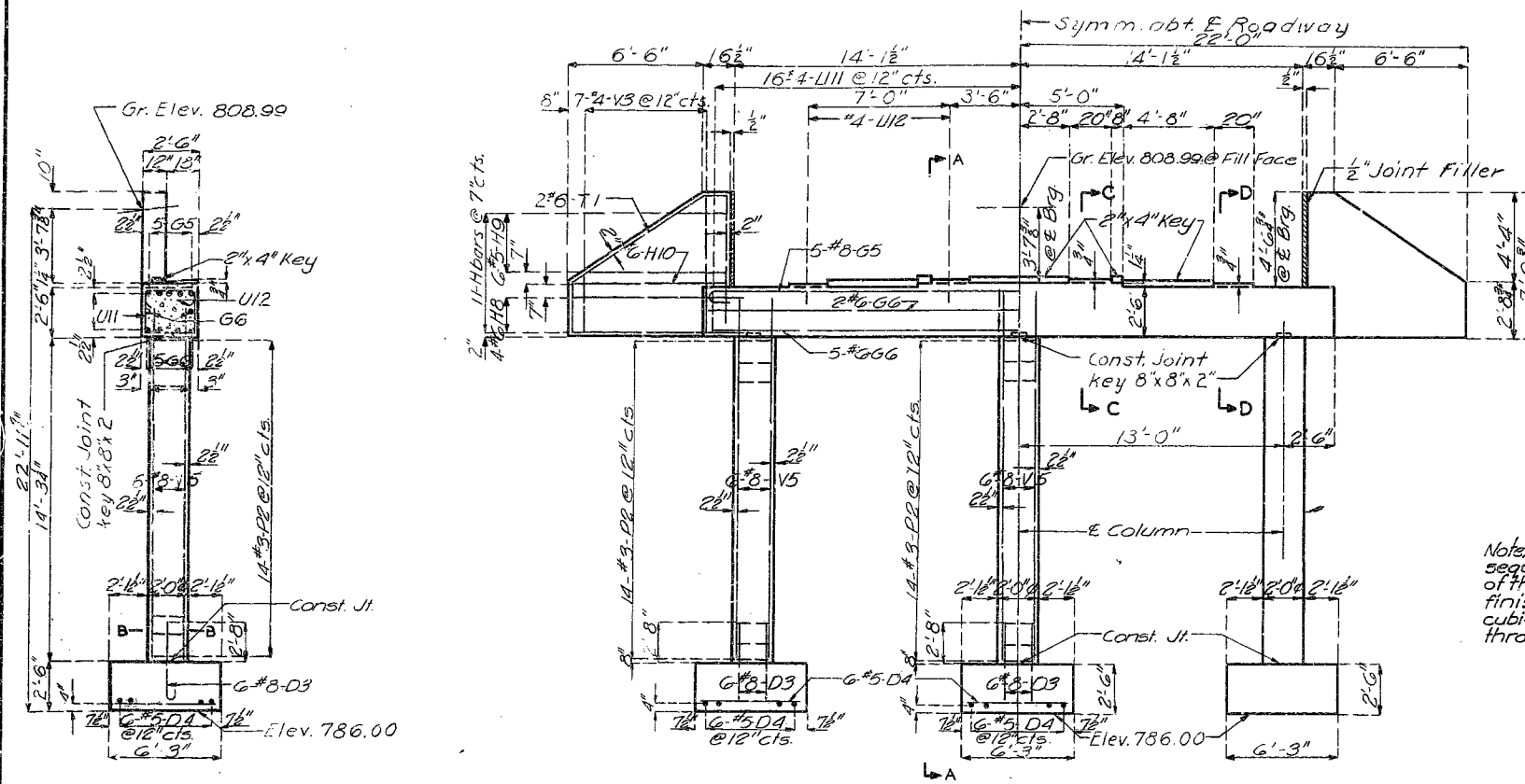
Sheet No. 3 of 7.

SEE FINAL PLANS BROWN-LINES

A-130

MISSOURI STATE HIGHWAY DEPARTMENT

FED. ROAD DIST. NO.	STATE	FED. AID PROJ. NO.	FISCAL YEAR	SHEET NO.	TOTAL SHEETS
5	MO.		19	57	

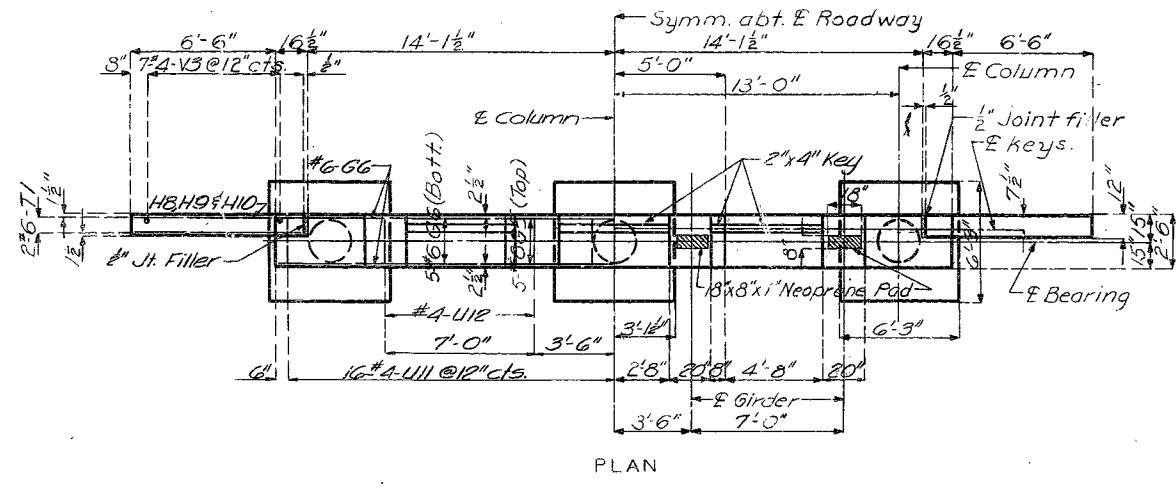
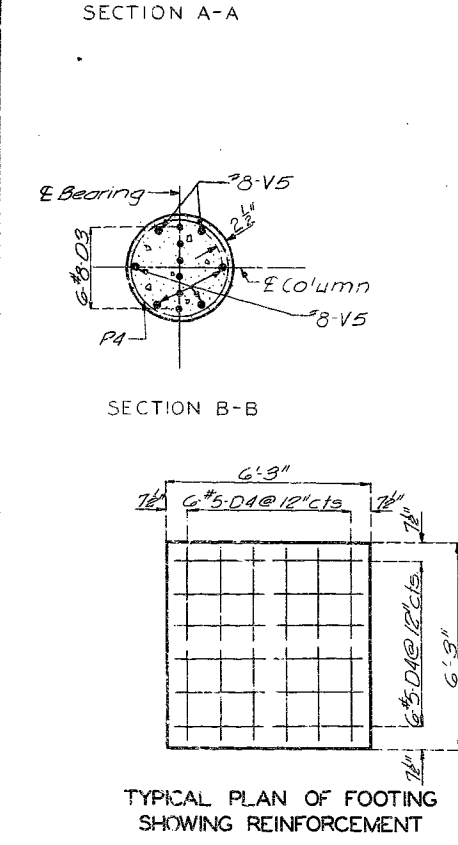
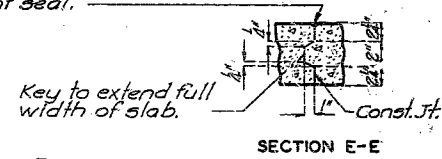


Note: The contractor shall observe the basic pouring sequence unless he can demonstrate to the satisfaction of the engineer that he is equipped to pour and satisfactorily finish the roadway slabs at a rate of not less than 30 cubic yards per hour and can maintain this rate through out the alternate pours.

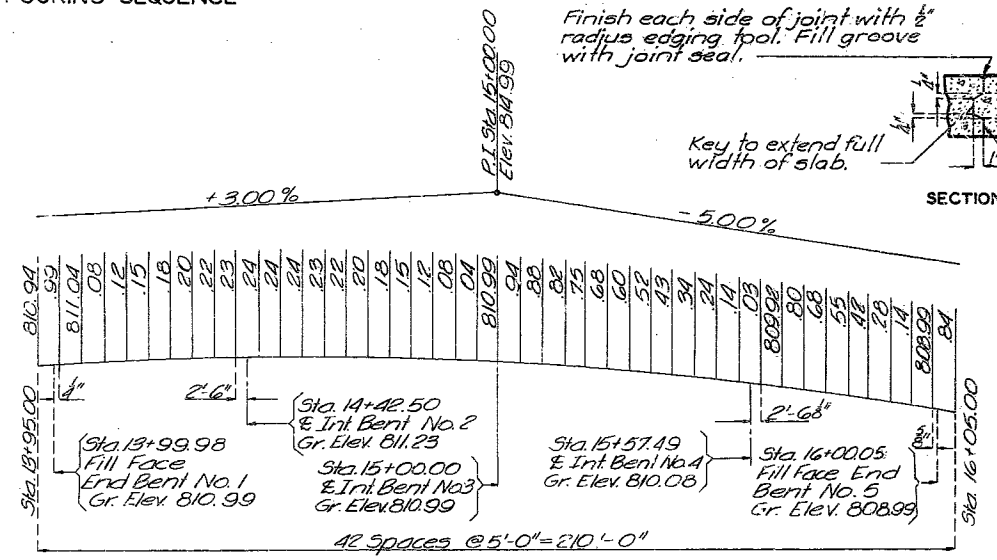
△ SLAB POURING SEQUENCE

	Sequence of Pours						
	Direction						
Basic Sequence	1	2	3	4	5	6	7
Alternate Pours	1+5+2			3+7+4		6	
	End Bt. to G to End Bt. Either Direction						

Finish each side of joint with 1/2" radius edging tool. Fill groove with joint seal.



DETAILS OF END BENT NO. 5



BRIDGE: RELOCATED COUNTY ROAD UNDERPASS

STATE ROAD FROM EAST OF ROUTE 65 TO COOPER CO. LINE
ABOUT 11.0 MILES S.W. OF BLACKWATER
PROJECT NO. I-70-2(10) (CRTE. I-70) STA. 1010+50

SALINE COUNTY

Drawn June 1961 by O.J.S. & C.C.
Checked July 1961 by [Signature]

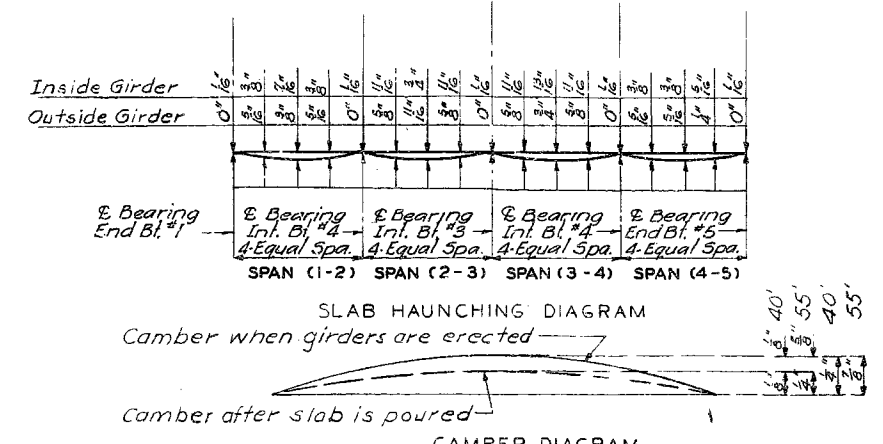
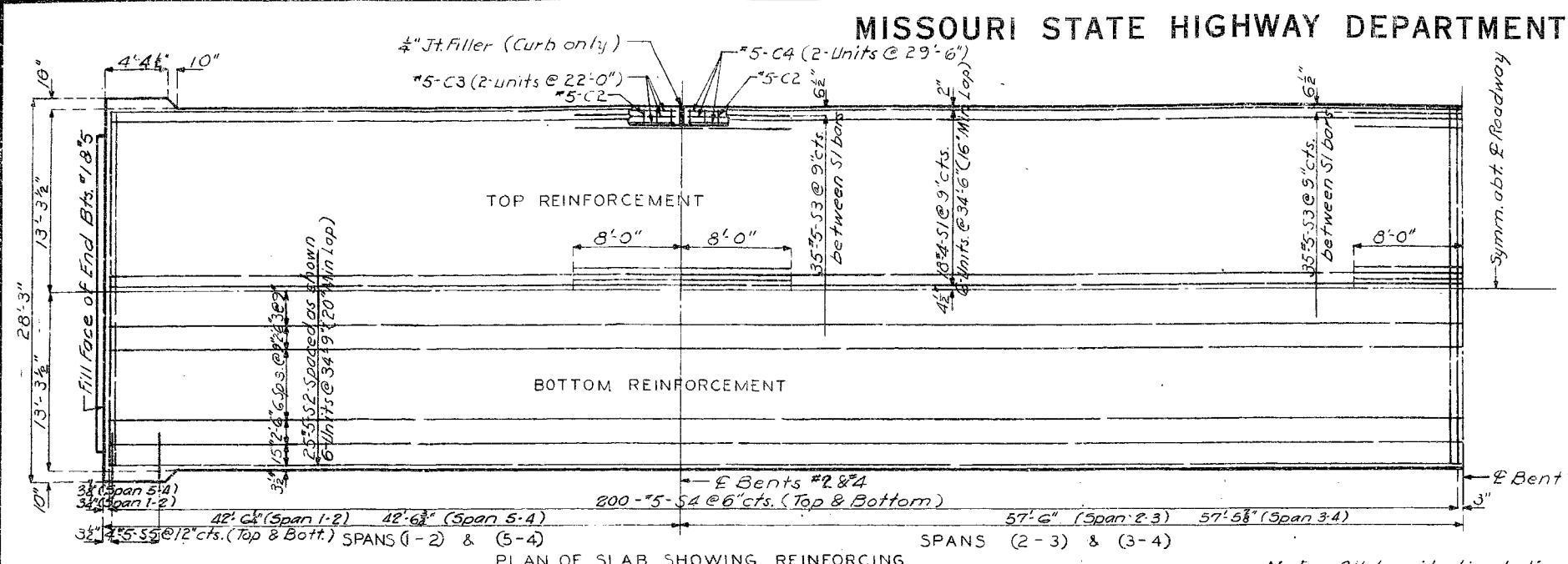
Note: This drawing is not to scale. Follow dimensions.

Sheet No. 4 of 7 △ Revised 10-5-62.

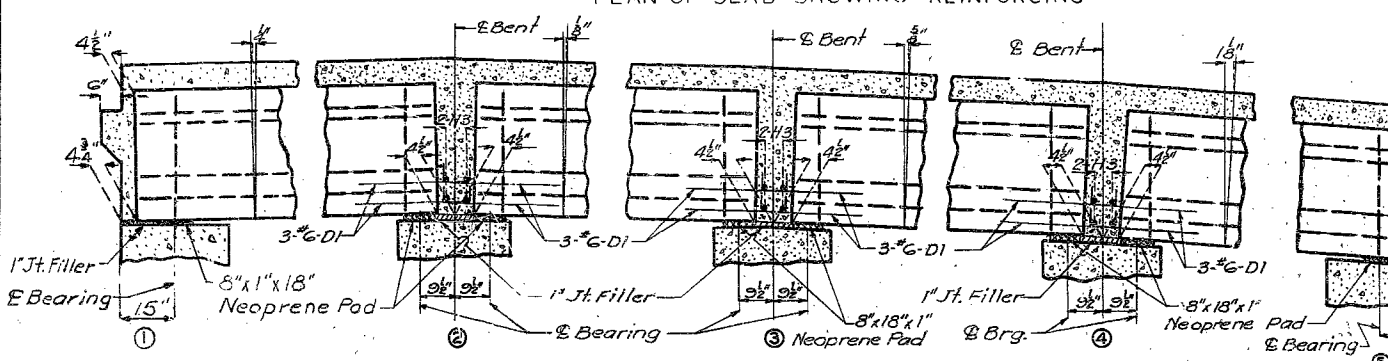
SEE FINAL PLANS BROWN-LINES

MISSOURI STATE HIGHWAY DEPARTMENT

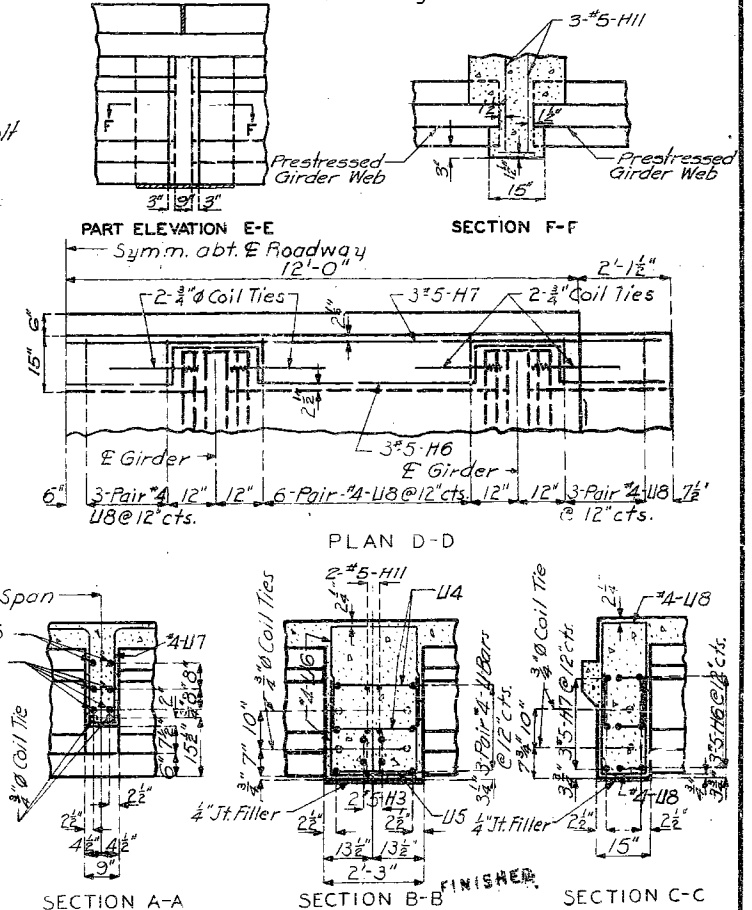
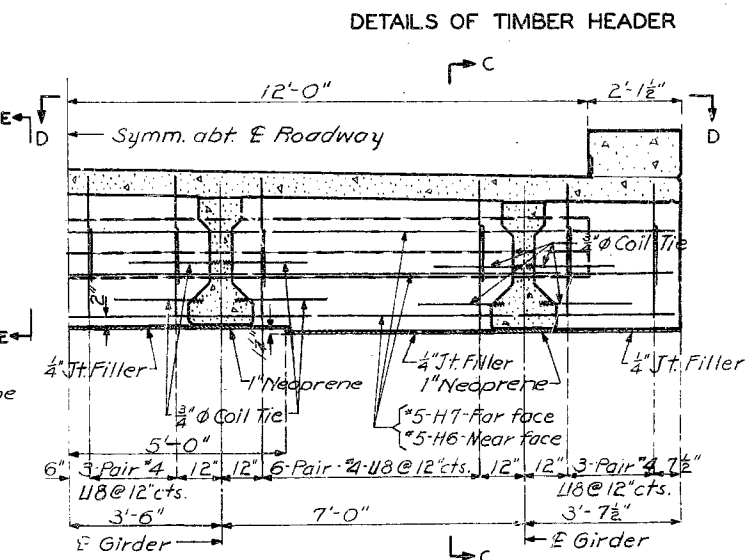
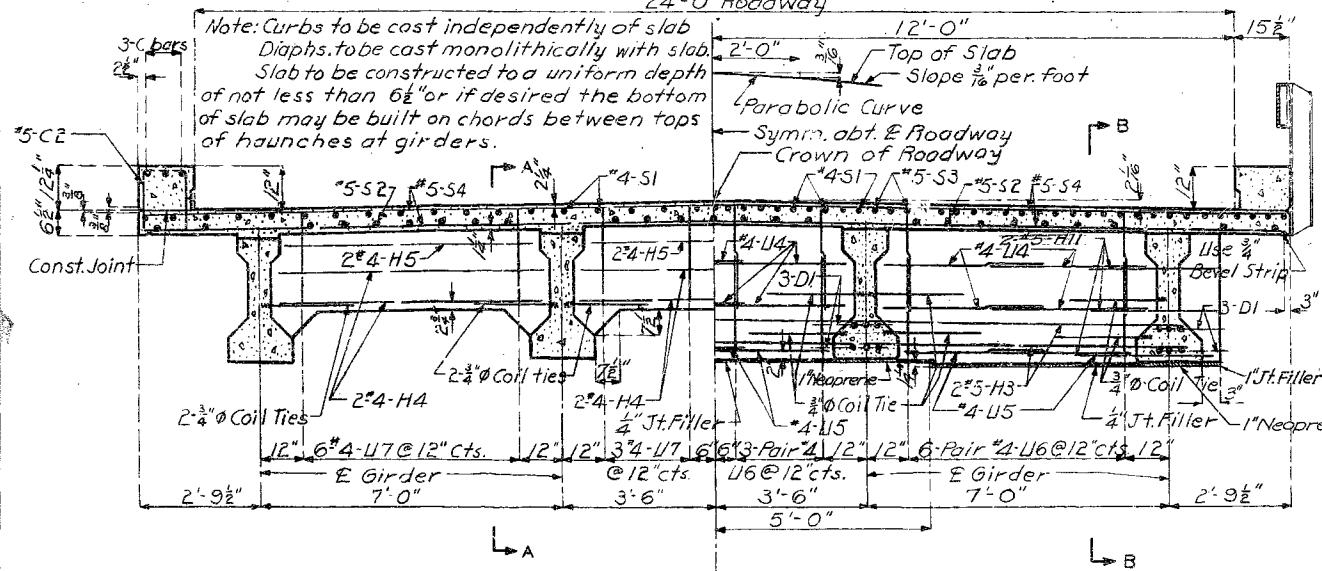
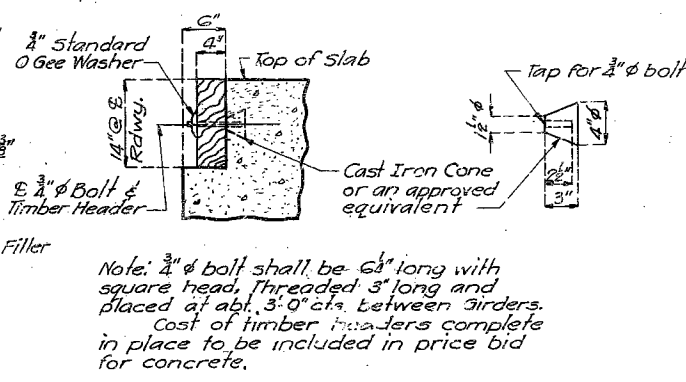
FED. ROAD DIST. NO.	STATE NO.	FED. AID PROJ. NO.	FISCAL YEAR	SHEET NO.	TOTAL SHEETS
5			19	57	



Note: Slab shall be built parallel to grade and to a minimum thickness of 6 1/2". Slab haunches shall be adjusted for any difference in girder camber from that shown in Camber Diagram. The concrete in slab haunches is included in Estimated Quantity of Class B1 Concrete.



Note: All longitudinal dimensions are horizontal.



BRIDGE: RELOCATED COUNTY ROAD UNDERPASS

STATE ROAD FROM EAST OF ROUTE 65 TO COOPER CO. LINE
ABOUT 11.0 MILES S. W. OF BLACKWATER
PROJECT NO. T-70-2(10) (RTE. I-7) STA. 1010+50

SALINE COUNTY

250

Drawn May 1961 by C.J.S. & J.H.K.
Checked July 1961 by [Signature]

Note: This drawing is not to scale. Follow dimensions.

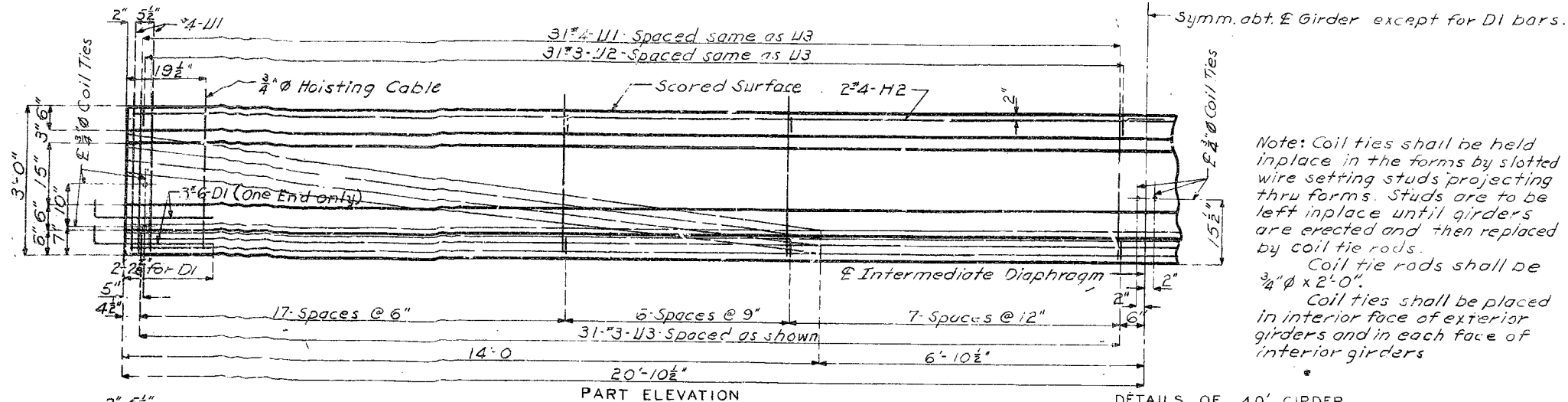
Sheet No. 5 of 7.

A-130

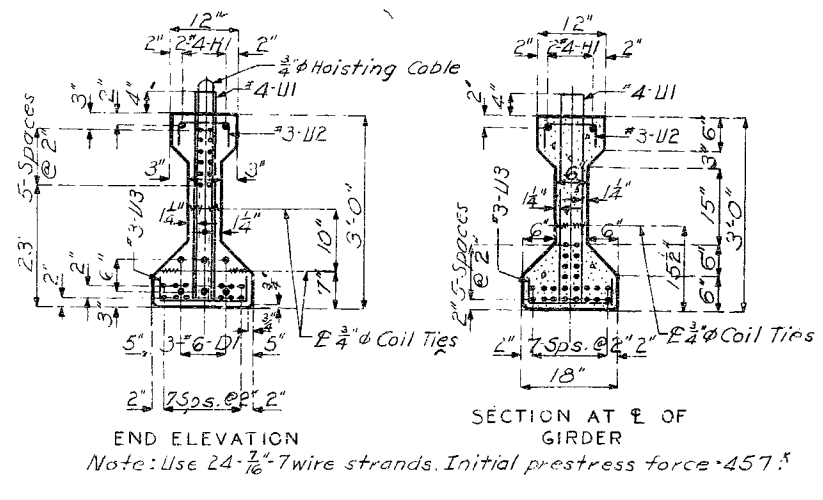
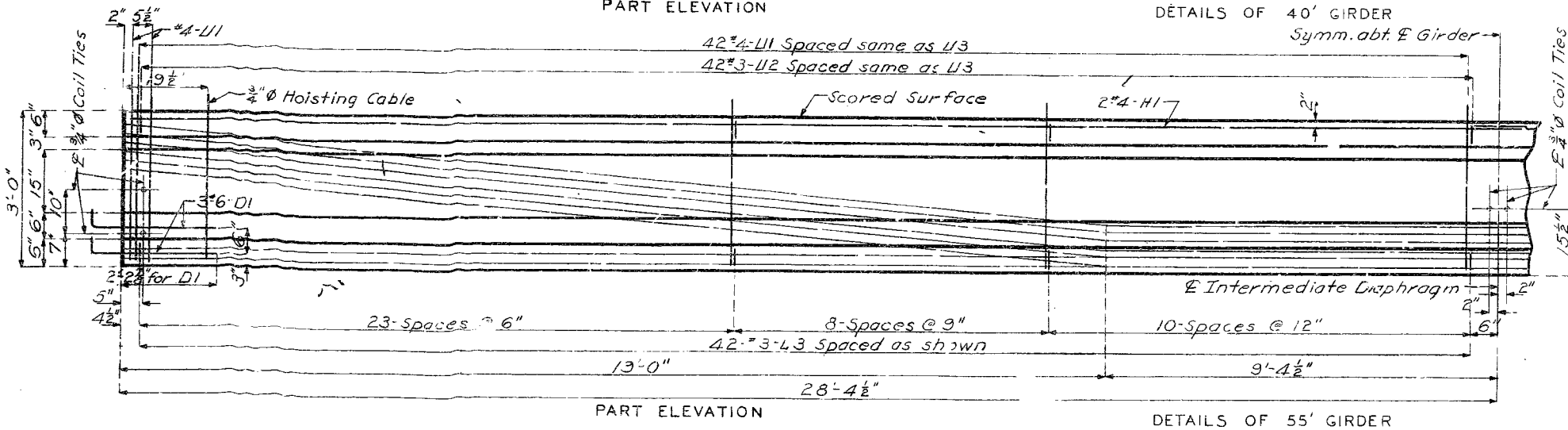
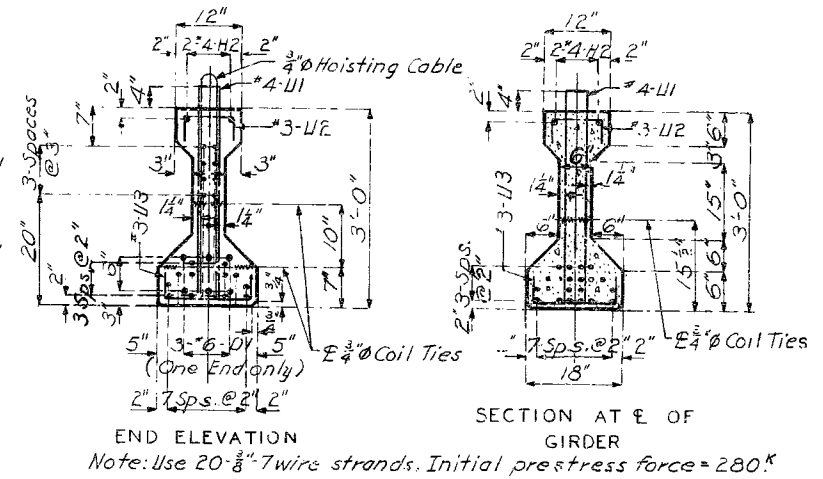
NO CONSTRUCTION CHANGES

MISSOURI STATE HIGHWAY DEPARTMENT

FED. ROAD DIST. NO.	STATE NO.	FED. AID PROJ. NO.	FISCAL YEAR	SHEET NO.	TOTAL SHEETS
5			19	53	

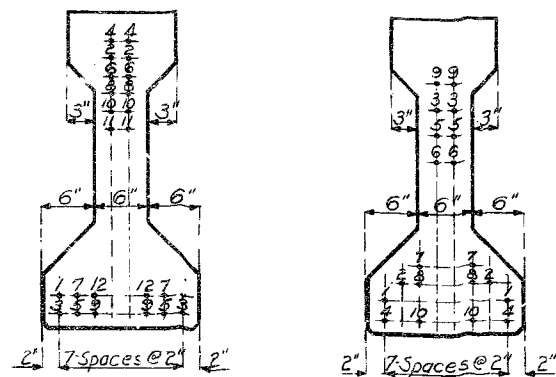


Note: Coil ties shall be held in place in the forms by slotted wire setting studs projecting thru forms. Studs are to be left in place until girders are erected and then replaced by coil tie rods.
 Coil tie rods shall be 3/4" φ x 2'-0".
 Coil ties shall be placed in interior face of exterior girders and in each face of interior girders.



GENERAL NOTES - PRESTRESSED GIRDERS
 Design Specifications A.A.S.H.O. 1957 and tentative revisions, T.1(58) and T.1(59)
 Loading H15-44 (15' future wearing surface).
 Non-prestressed Reinforcing Steel: stress 20,000 psi.
 Prestressing Strands: 7 wire uncoated strands, stress relieved after stranding of the size indicated on details.
 Concrete for prestressed girders shall be Class A (air-entrained).
 Ultimate Compressive Stress 5,000 psi.
 Minimum Compressive stress at transfer 4,000 psi.
 Prestressed Concrete: Ec 4,000,000 psi.
 Prestressing: Details of proposed method of manufacture of prestressed girders including casting beds, jacks, temporary anchorage devices, method of inducing drape in strands, transfer of stress and forms are to be submitted to the Engineer for approval. As the operations of manufacture proceed the contractor is to submit to the Engineer records of the jacking forces, elongation of strands, compressive stress of concrete at transfer, camber of girders and any other information as requested by the Engineer. The transfer of stress shall be carried out in the order as shown on the plans and before the concrete is allowed to dry out after curing.
 Bearings: Bearings shall be Neoprene Pads (70 durometer), 8" x 18" x 1" and shall conform to specifications of A.A.S.H.O. T.1(59). Cost of Neoprene Pads shall be included in price bid for Prestressed Concrete Members. See Special Provisions.

BILL OF REINFORCING STEEL - PRESTRESSED GIRDERS					
No	Size	Length	Mark	Location	Bending Sketches
40' Girder					
48	#6	3'-3"	DI	Bottom Flange	
32	#4	2'-1'-6"	H2	Top Flange	
528	#4	6'-9"	U1	Web	
496	#3	18"	U2	Top Flange	
436	#3	2'-0"	U3	Bottom Flange	
55' Girder					
96	#6	3'-3"	DI	Bottom Flange	
32	#4	2'-9'-0"	H1	Top Flange	
704	#4	6'-9"	U1	Web	
672	#3	18"	U2	Top Flange	
672	#3	2'-0"	U3	Bottom Flange	



55' GIRDER 40' GIRDER
 STRESSING SEQUENCE
 Note: Strands shall be cut in pairs in the sequence shown above.

FINISHED

BRIDGE: RELOCATED COUNTY ROAD UNDERPASS

STATE ROAD FROM EAST OF ROUTE 65 TO COOPER CO. LINE
 ABOUT 11.0 MILES S.W. OF BLACKWATER
 PROJECT NO. I-7 -2(10) (RTE. I-70) STA. 1010+50

FINISHED

SALINE COUNTY

Drawn June 1961 by O.V.S. & C.C.
 Checked July 1961 by [Signature]

Note: This drawing is not to scale. Follow dimensions.

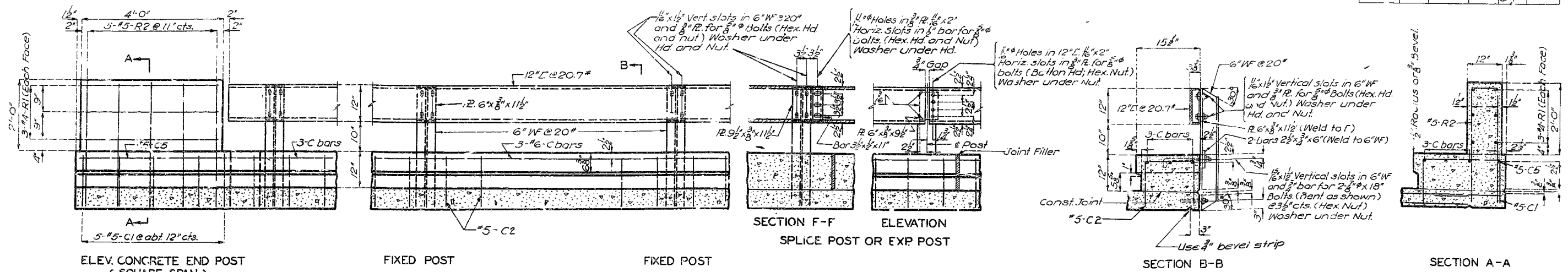
Sheet No. G of 7.

A-130

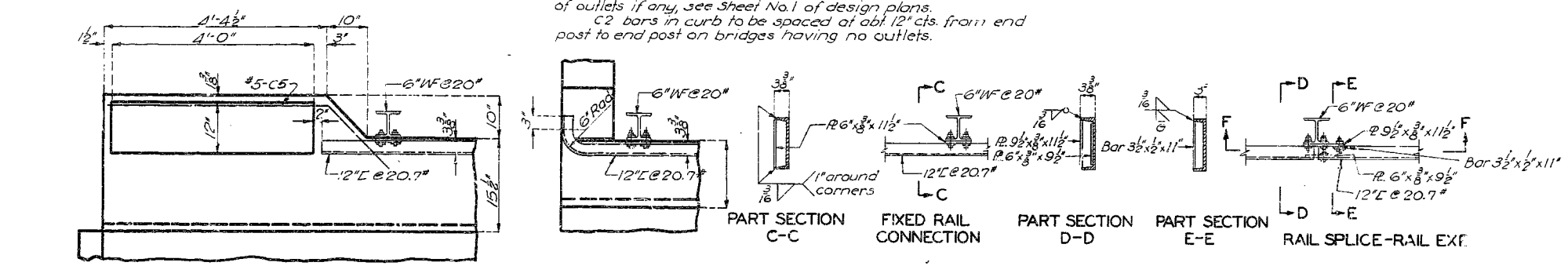
NO CONSTRUCTION CHANGES

MISSOURI STATE HIGHWAY DEPARTMENT

FED. ROAD DIST. NO.	STATE	FED. AID PROJ. NO.	FISCAL YEAR	SHEET NO.	TOTAL SHEETS
5	MO		19	59	



FIXED POST
 Note: Outlets to be centered between rail posts. For location of outlets if any, see Sheet No. 1 of design plans.
 C2 bars in curb to be spaced at abt. 12" cts. from end post to end post on bridges having no outlets.

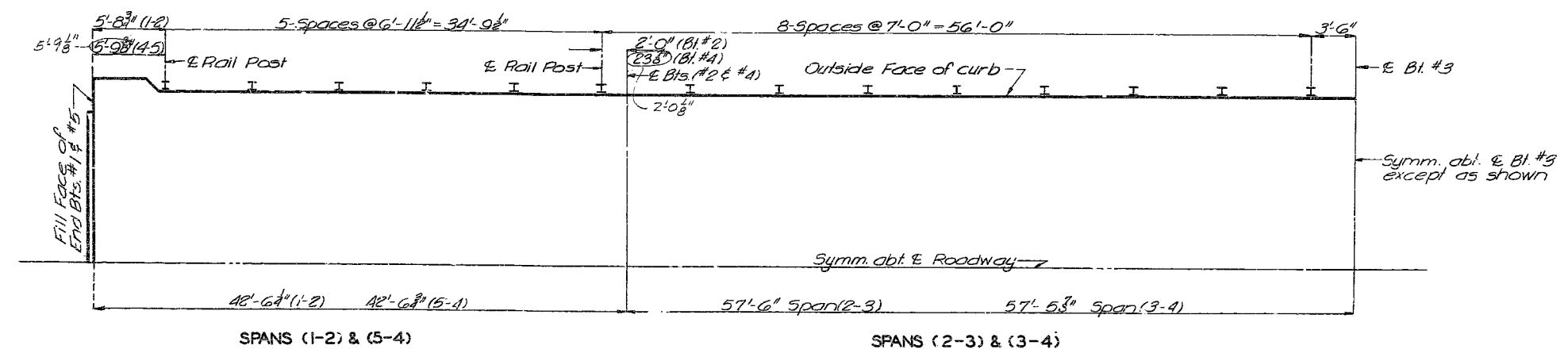


Note: Use bevel as shown for exposed faces of all filled joints, except at top surface of roadway slab. Use edging tool with 3/4" radius at top surface of roadway slab each side of joint and fill flush with joint seal as shown.

DETAILS OF BEVEL FOR FILLED JOINTS

GENERAL NOTES:

Top of curbs and end posts to be built parallel to grade. Vertical faces of end posts to be vertical. All exposed edges of end posts to be beveled 3/8". 6" WF posts to be set normal to grade. 12" L rails shall be fabricated to conform to horizontal and vertical alignment of curb.



Note: Longitudinal dimensions shown are horizontal.

BRIDGE: RELOCATED COUNTY ROAD UNDERPASS
 STATE ROAD FROM EAST OF ROUTE 65 TO COOPER CO. LINE
 ABOUT 11.0 MILES S.W. OF BLACKWATER
 PROJECT NO. I-70-2'01 (R.F.E. I-70) STA. 1010+50
SALINE COUNTY

Assembled June 1961 by O.J.S. & C.C.
 Checked July 1961 by J.D.

Note: This drawing is not to scale. Follow dimensions.

Sheet No. 7 of 7

A-130

NO CONSTRUCTION CHANGES

252

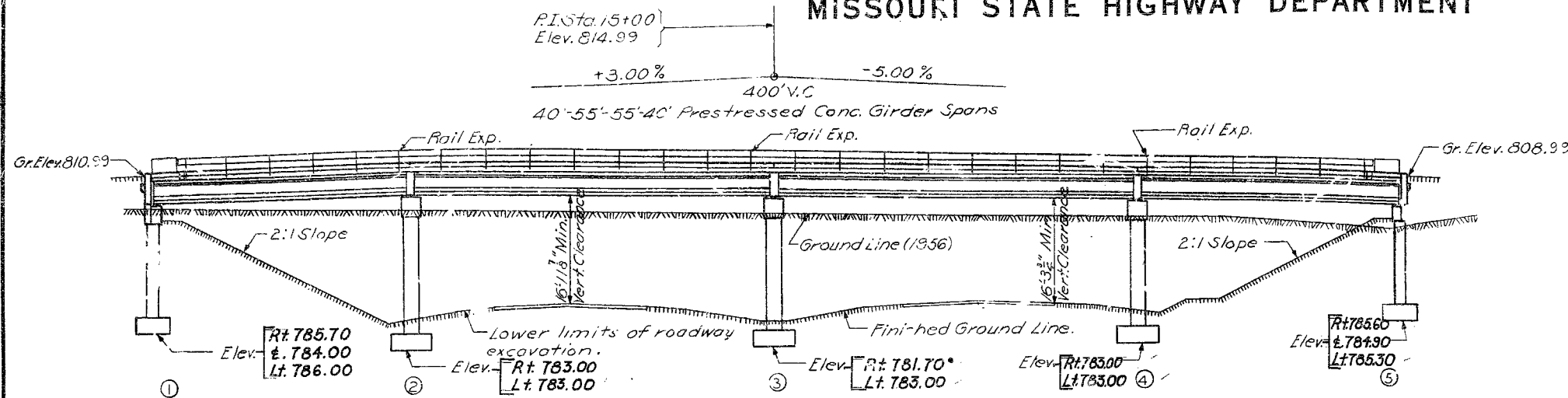
MISSOURI STATE HIGHWAY DEPARTMENT

FED. ROAD DIST. NO.	STATE	FED. AID PROJ. NO.	FISCAL YEAR	SHEET NO.	TOTAL SHEETS
5	MO.		19	53	

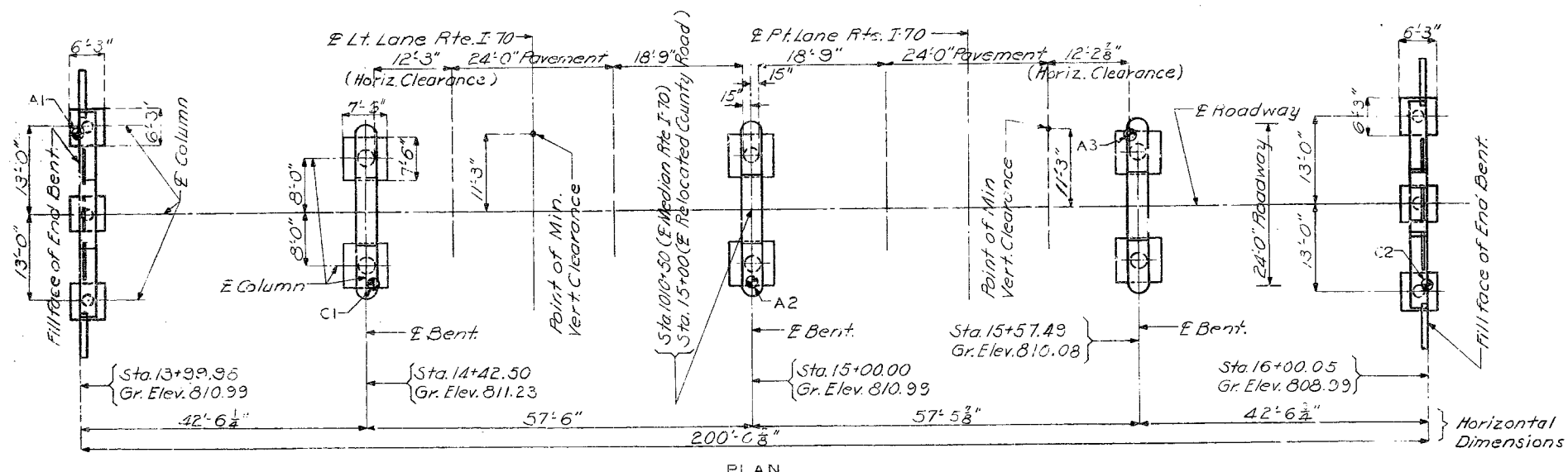
FINAL PLANS

GENERAL NOTES:

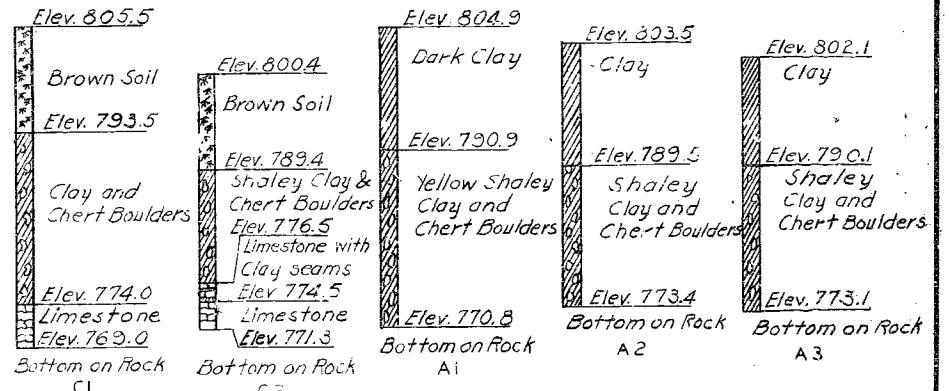
For specifications and notes pertaining to prestressed members refer to sheet No. 6 of 7.
 Design Specifications A.A.S.H.O. 1957
 Loading H15-44 (Future Wearing Surface 15" 1/2")
 Reinforcing Steel Stress 20,000 #/sq
 Structural Steel Stress 15,000 #/sq
 Concrete Class B Stress 1,200 #/sq
 Concrete Class B1 Stress 1,600 #/sq
 Concrete for Superstructure, except for girders, was Class B1 (Air-Entrained).
 Concrete for Substructure was Class B (Air-Entrained).
 Paint: Shop, none; Field, contact surfaces of bolted field connections, steel to steel, one coat of red lead and surfaces of rail posts in contact with concrete, three coats of red lead. All other exposed surfaces first coat red lead, second coat brown, third coat aluminum. Payment for cleaning and painting such surfaces was included in price bid for items painted.
 Where joint filler was specified on the plans it conformed with the requirements of Section 157.2.4 of the Standard Specifications.
 Permits were obtained for all truck loads over legal length.
 Qualification of welding operators was required.



Note: Footings were placed on material satisfactory to the Engineer and capable of supporting at least 5000 #/sq. Footings were not placed higher than elevations shown on these plans.
 Bearing pressure of 5000 #/sq used in design of footings.



PLAN



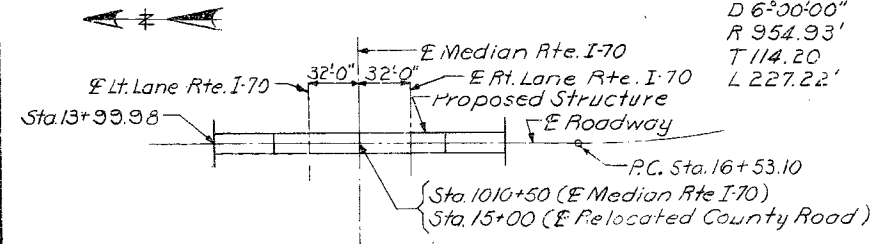
Note: Soundings C1 & C2 taken with a Core Drill. Soundings A1, A2 & A3 taken with an Auger

LOG OF SOUNDINGS

NBM: Elev. 809.84 Nail in top of wing-wall S.W. corner Br. #A-130
BRIDGE: RELOCATED COUNTY ROAD UNDERPASS
 STATE ROAD FROM EAST OF ROUTE 65 TO COOPER CO. LINE
 ABOUT 11.0 MILES S.W. OF BLACKWATER
 P.F.O. FCT NO. I-70-2(10) (RTE. I-70) STA. 1010 + 50
SALINE COUNTY

CURVE DATA (Relocated Co. Road)

PI. Sta. 17+67.30
 $\Delta 13^{\circ}38'00''$ Left
 $D 6^{\circ}00'00''$
 $R 954.93'$
 $T 114.20'$
 $L 227.22'$



LOCATION SKETCH

Item	QUANTITIES		
	Substr.	Superstr.	Total
Class 1 Excavation for Structures Cu. Yds.	428.5		428.5
Class B1 Concrete Cu. Yds.		156.4	156.4
Class B Concrete Cu. Yds.	124.0		124.0
40' Prestressed Concrete Members Each		8	8
55' Prestressed Concrete Members Each		8	8
Fabricated Structural Carbon Steel Lbs.		12,980	12,980
Reinforcing Steel (Except Prest. Members) Lbs.	16,468	39,780	56,250
Class 1 Excavation for Structures Plus 25%	10		10

Note: All excavation for bridge was paid for as Class 1 Excavation for Structures.
 Quantity of Class 1 Excavation for Structure includes only amount of excavation below lower limits of roadway excavation.

Drawn June 1961 by O.J.S.
 Checked July 1961 by JS

Note: This drawing is not to scale. Follow dimensions.

Sheet No. 1A of 4

FINAL PLANS

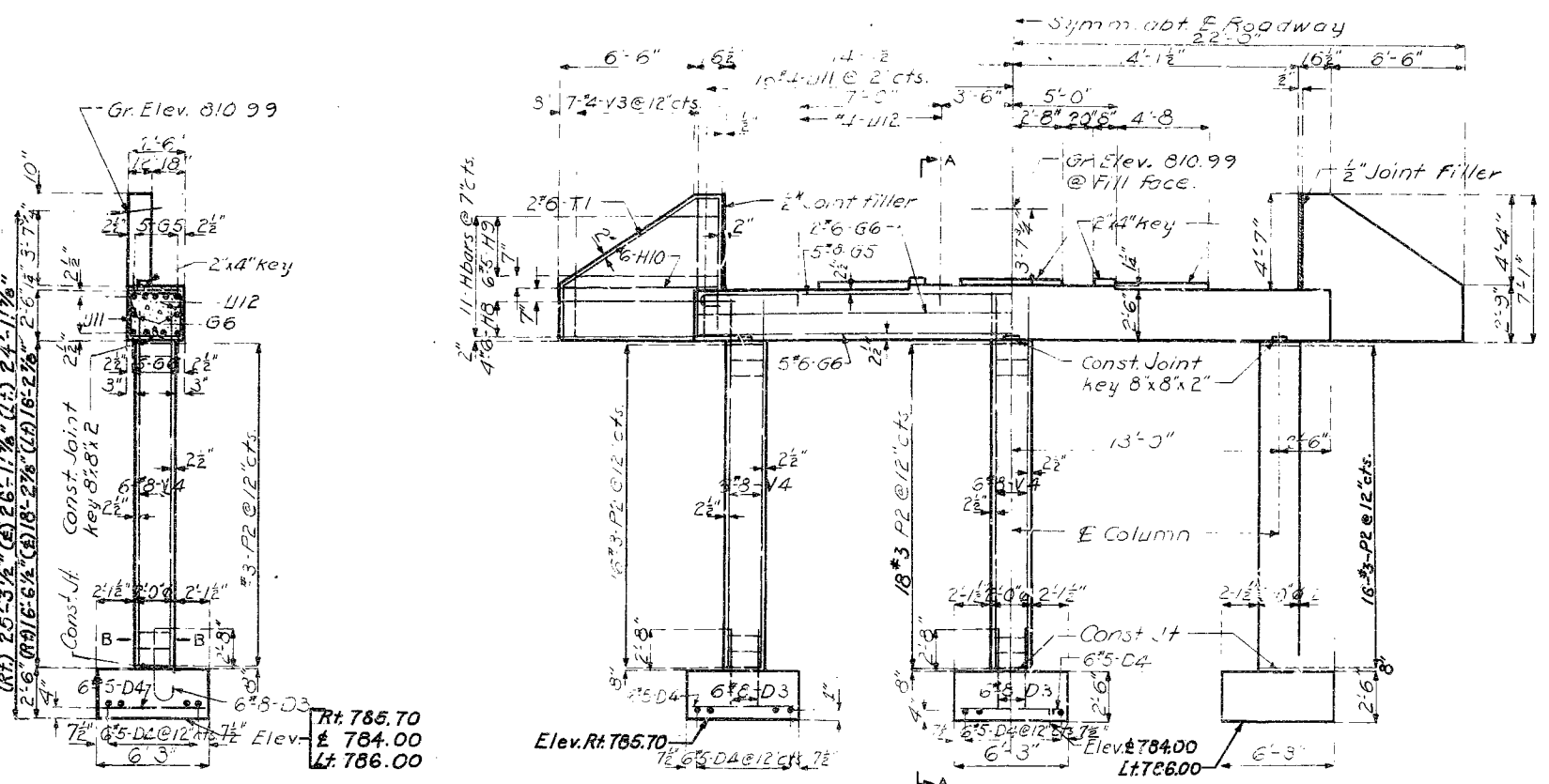
STD. 54.00
 A-130

253

MISSOURI STATE HIGHWAY DEPARTMENT

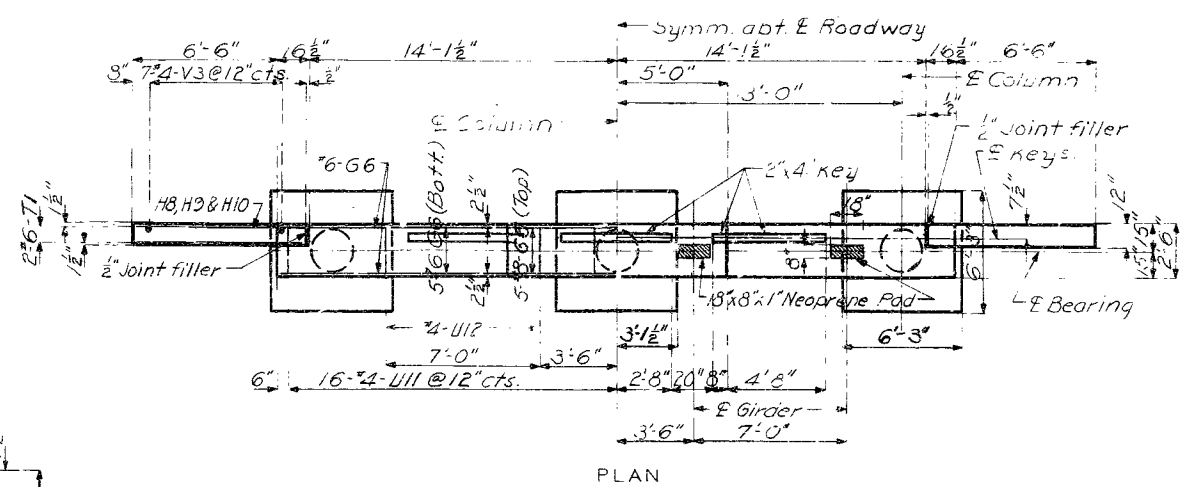
FED. ROAD DIST. NO.	STATE NO.	FED. AID PROJ. NO.	FISCAL YEAR	SHEET NO.	TOTAL SHEETS
5			19	54	

FINAL PLANS

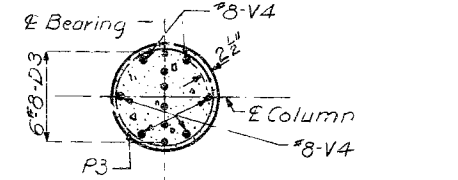


SECTION A-A

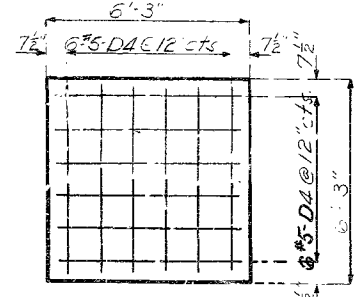
ELEVATION



PLAN

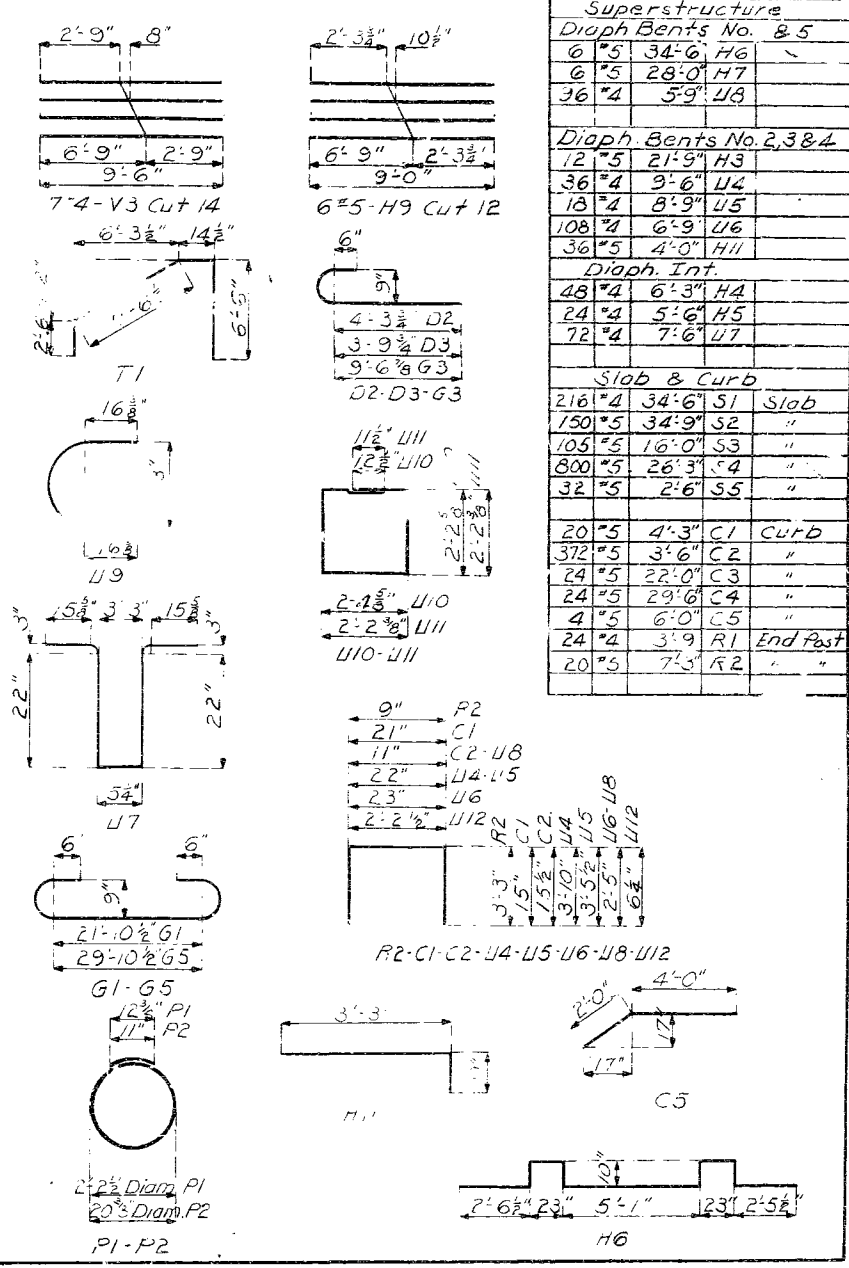


SECTION B-B



TYPICAL PLAN OF FOOTING SHOWING REINFORCEMENT

BILL OF REINFORCING STEEL (Except Prestressed Members)				Bending Sketches & Cutting Diagrams					
No.	Size	Length	Mark	Location	No.	Size	Length	Mark	Location
Substructure									
End Bent No. 1									
18	#8	5'-6"	D3	Footing	2'-9"	#8			
36	#5	6'-0"	D4	"	2'-3 1/2"	#10 1/2			
5	#8	33'-3"	G5	Beam	6'-9"	#2	2'-9"		
7	#6	30'-6"	G6	"	9'-6"				
Int. Bents No. 2, 3 & 4									
8	#6	8'-3"	H8	Wing	6'-9"	#2	2'-9"		
6	#5	9'-0"	H9	"	9'-0"				
2	#6	7'-6"	H10	"	7'-4-V3 Cut 14				
50	#6	6'-3"	P2	Column	6'-3 1/2"	#14 1/2			
4	#6	17'-9"	T1	Wing					
31	#4	9'-9"	U11	Beam					
4	#4	3'-3"	U12	"					
7	#4	9'-6"	V3	Wing					
18	#8	18'-6"	V4	Column					
6	#6	4'-9"		Col. Splice					
Slab & Curb									
216	#4	34'-6"	S1	Slab					
105	#5	34'-9"	S2	"					
105	#5	16'-0"	S3	"					
800	#5	26'-3"	S4	"					
32	#5	2'-6"	S5	"					
20	#5	4'-3"	C1	Curb					
372	#5	3'-6"	C2	"					
24	#5	22'-0"	C3	"					
24	#5	29'-6"	C4	"					
4	#5	6'-0"	C5	"					
24	#4	3'-9"	R1	End Post					
20	#5	7'-5"	R2	"					



FINISHED

BRIDGE: RELOCATED COUNTY ROAD UNDERPASS
 STATE ROAD FROM EAST OF ROUTE 65 TO COOPER CO. LINE
 ABOUT 11.0 MILES S.W. OF BLACKWATER
 PROJECT NO. I 70-2(10)(RTE I-70) STA. 1010 +50

SALINE COUNTY FINISHED

Drawn by O.J.S.
 Checked by

Note: This drawing is not to scale. Follow dimensions.

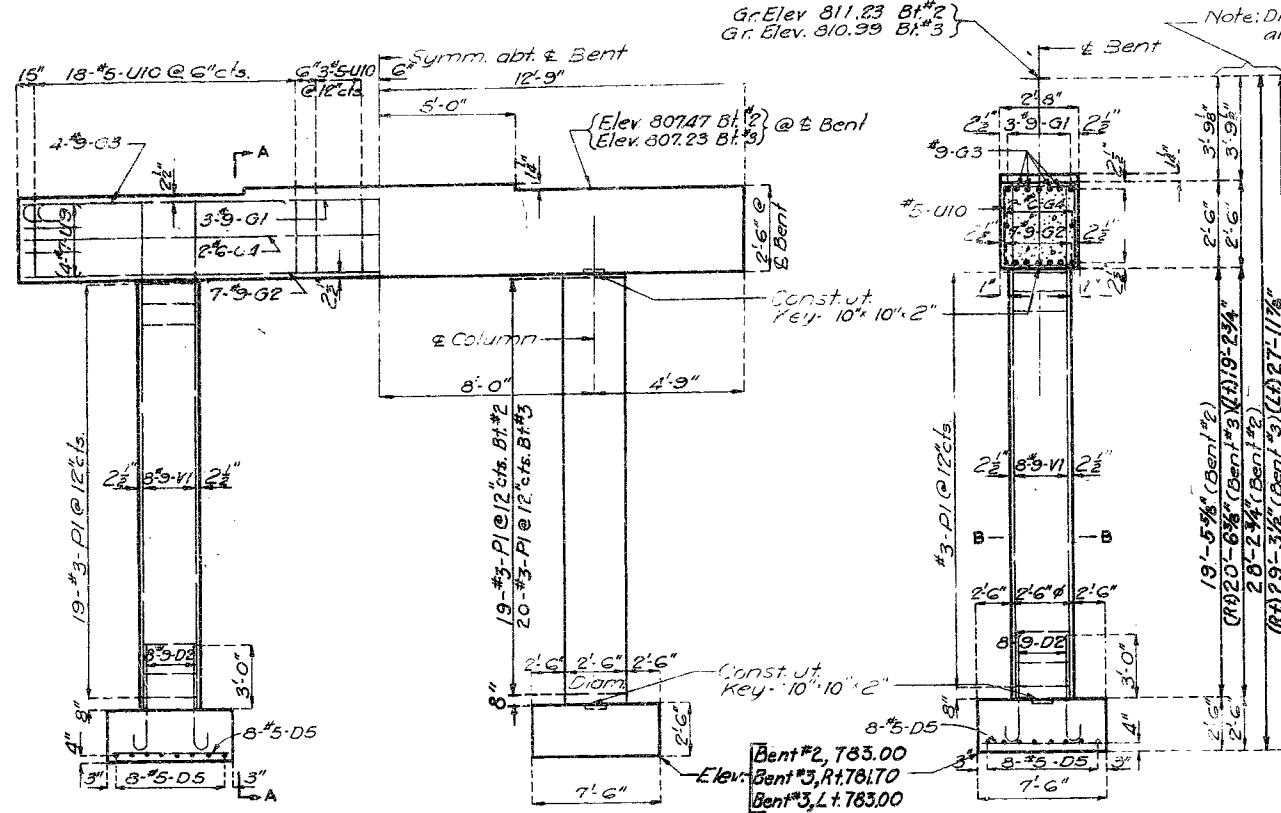
Sheet No. 2A of 4

FINAL PLANS

254

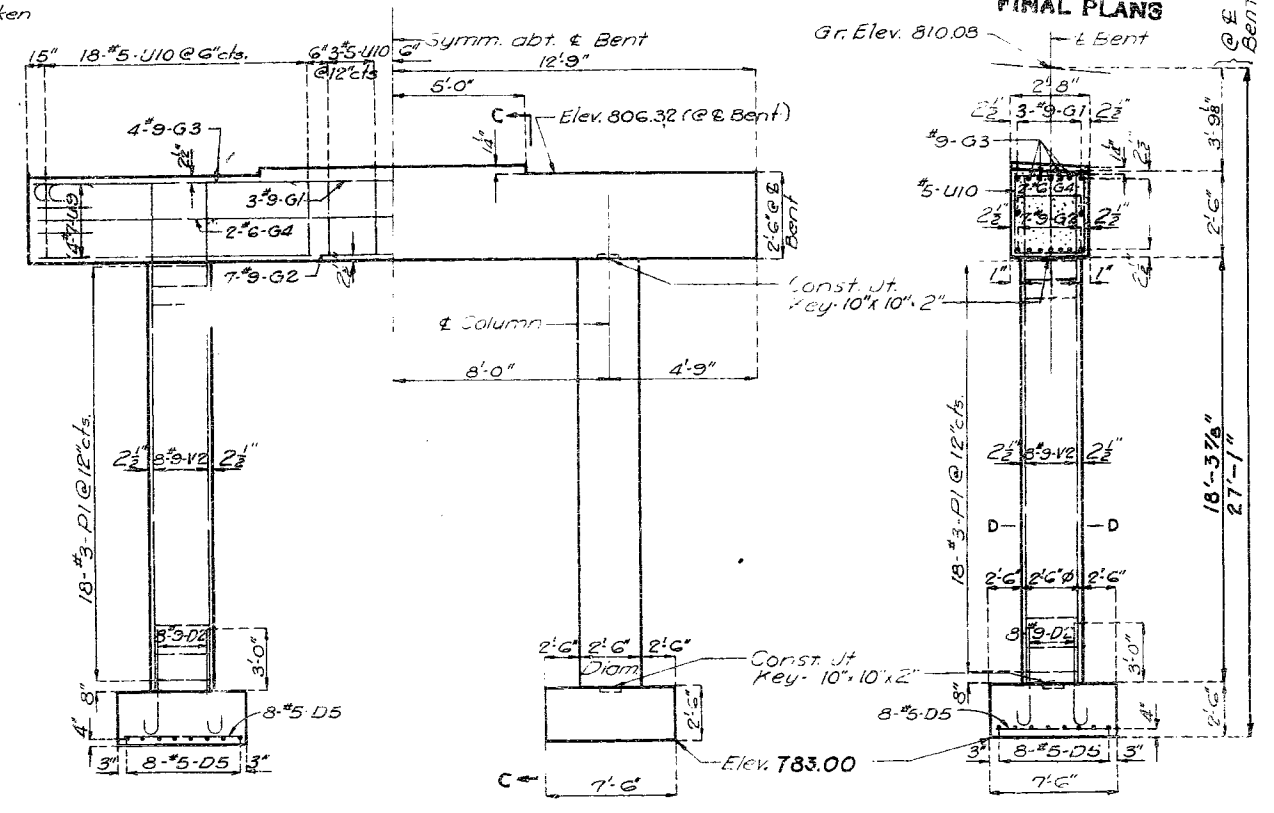
MISSOURI STATE HIGHWAY DEPARTMENT

FED. ROAD DIST. NO.	STATE	FED. AID PROJ. NO.	FISCAL YEAR	SHEET NO.	TOTAL SHEETS
5	MO.		19	2	



ELEVATION

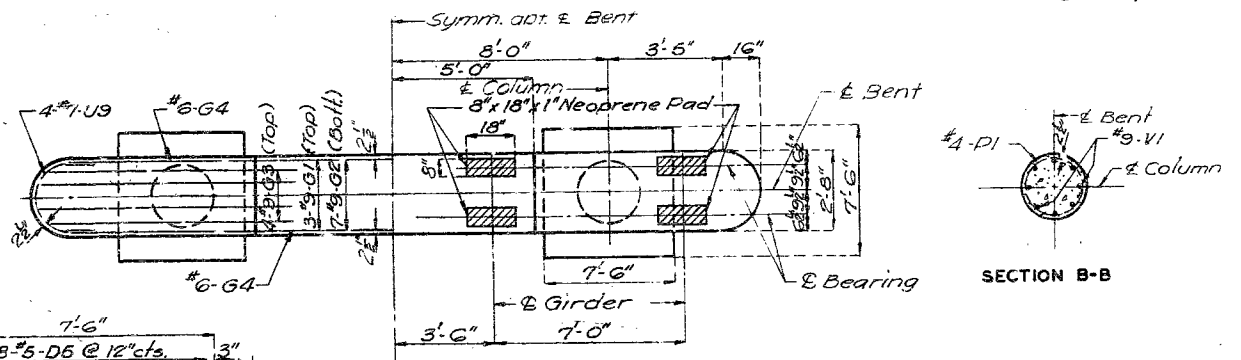
SECTION A-A



ELEVATION

SECTION C-C

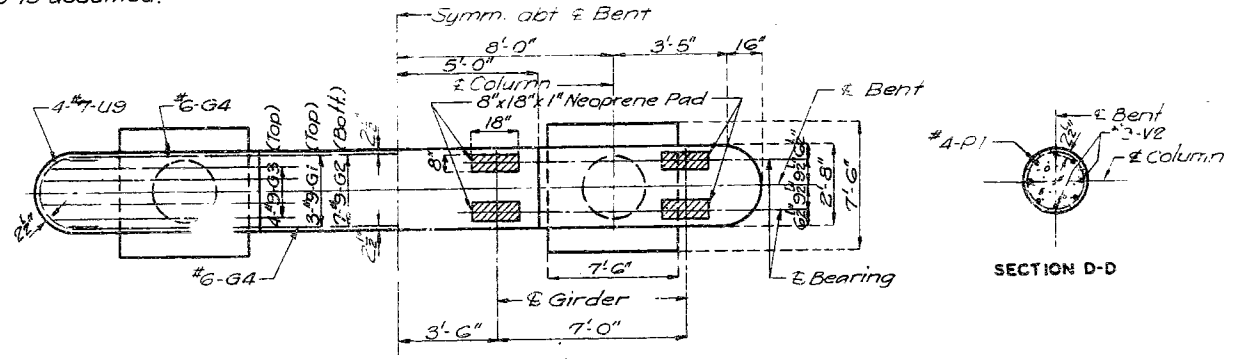
Note: In computation of vertical dimensions a 8" compression in bearing pads is assumed.



SECTION B-B

PLAN

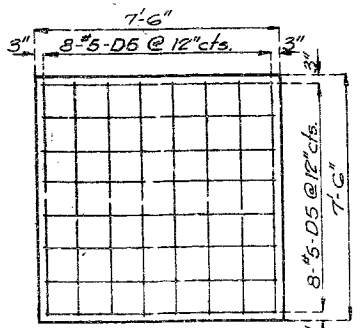
DETAILS OF INTERMEDIATE BENTS NO. 2 & 3



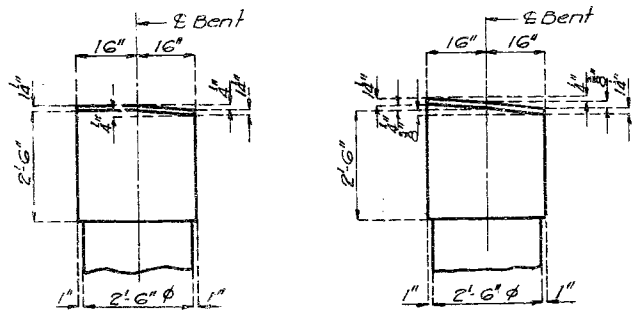
SECTION D-D

PLAN

DETAILS OF INTERMEDIATE BENT NO. 4



TYPICAL PLAN OF FOOTING SHOWING REINFORCEMENT



END ELEVATION BT. NO. 3

END ELEVATION BT. NO. 4

Note: Top of Beam and step of Bent No. 2 was level.

BRIDGE: RELOCATED COUNTY ROAD UNDERPASS

STATE ROAD FROM EAST OF ROUTE 65 TO COOPER CO. LINE
ABOUT 11.0 MILES S.W. OF BLACKWATER
PROJECT NO. I-70-2(10) (RTE. I-7) STA. 1010+50

SALINE COUNTY

Drawn May 1961 by O.J.S. & J.H.K.
Checked July 1961 by [Signature]

Note: This drawing is not to scale. Follow dimensions.

Sheet No. 3A of 4

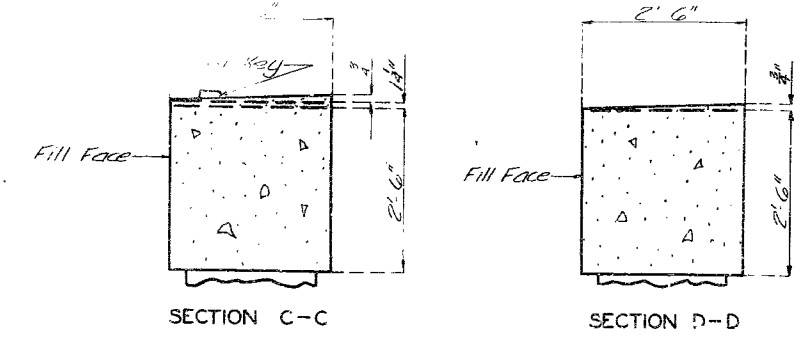
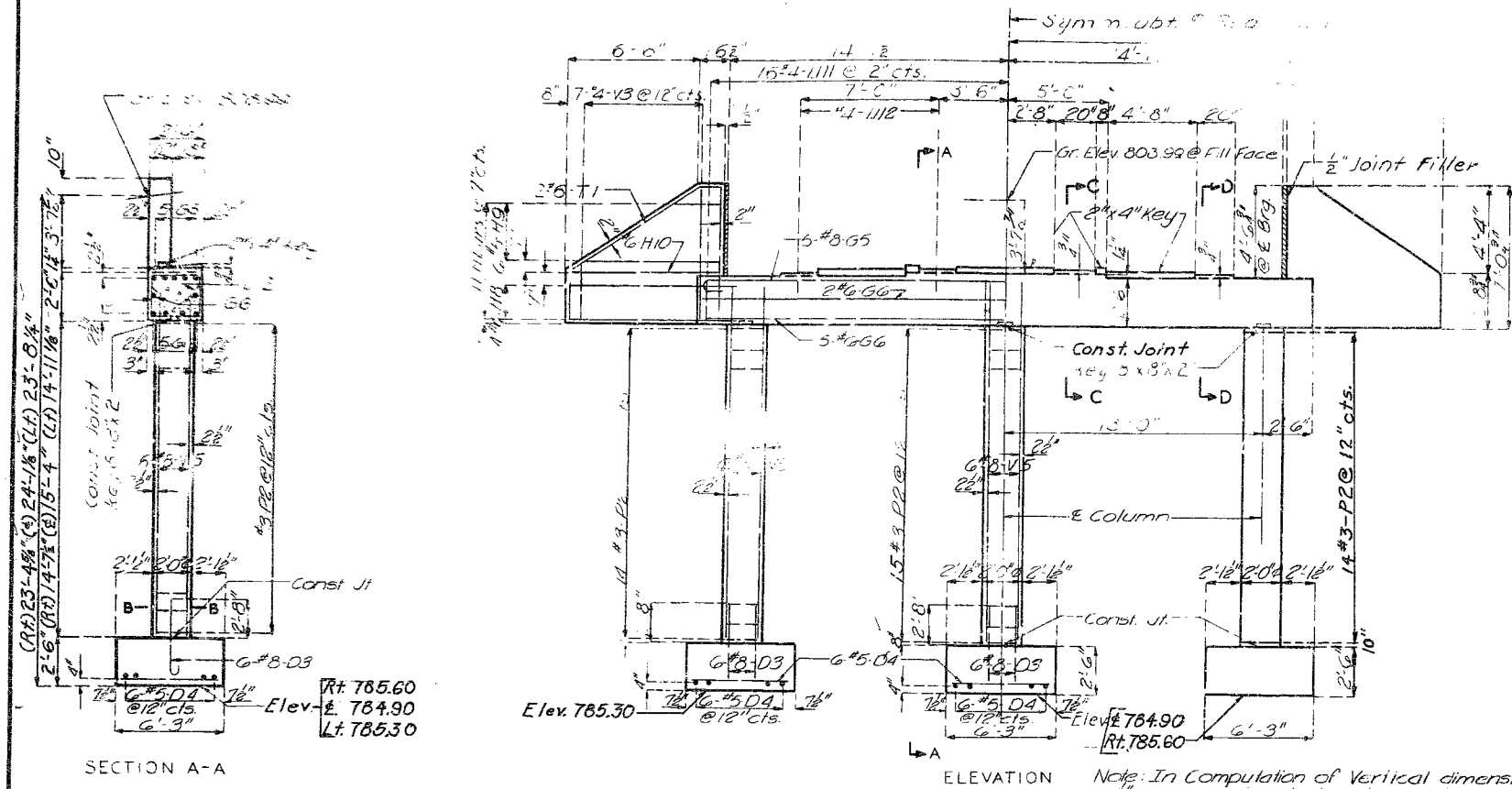
A-130

FINAL PLANS

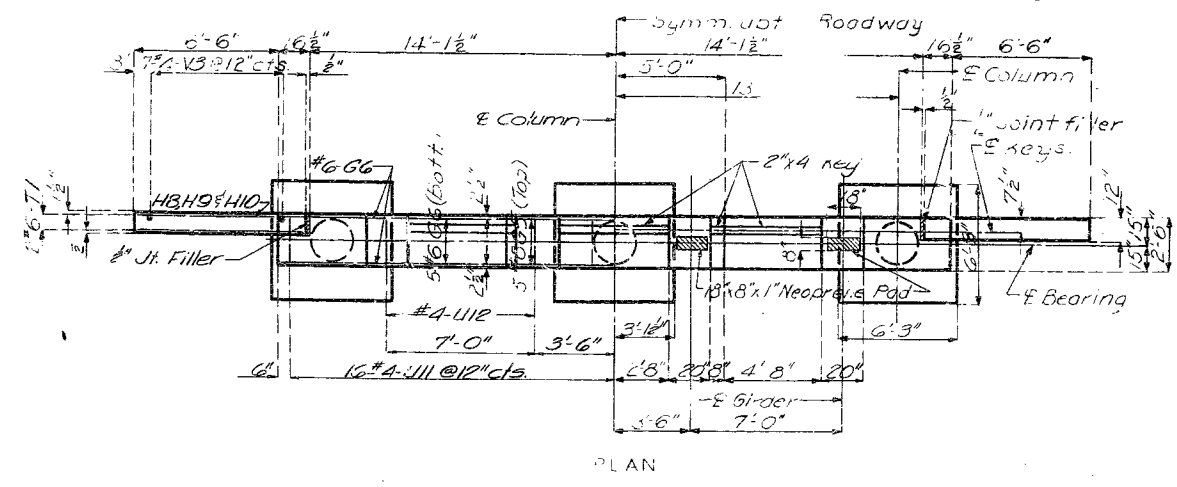
255

MISSOURI STATE HIGHWAY DEPARTMENT

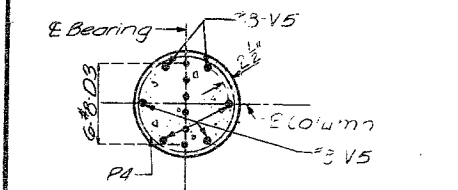
FED. ROAD DIST. NO.	STATE	FED. AID PROJ. NO.	FISCAL YEAR	SHEET NO.	TOTAL SHEETS
5	MO.		19	5	



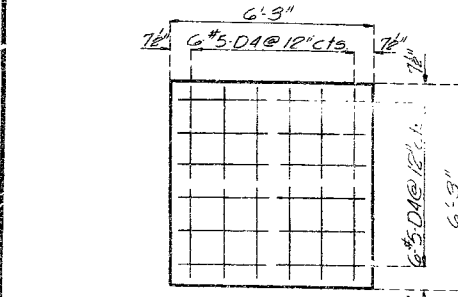
FINAL PLANS



PLAN
DETAILS OF END BENT NO. 5



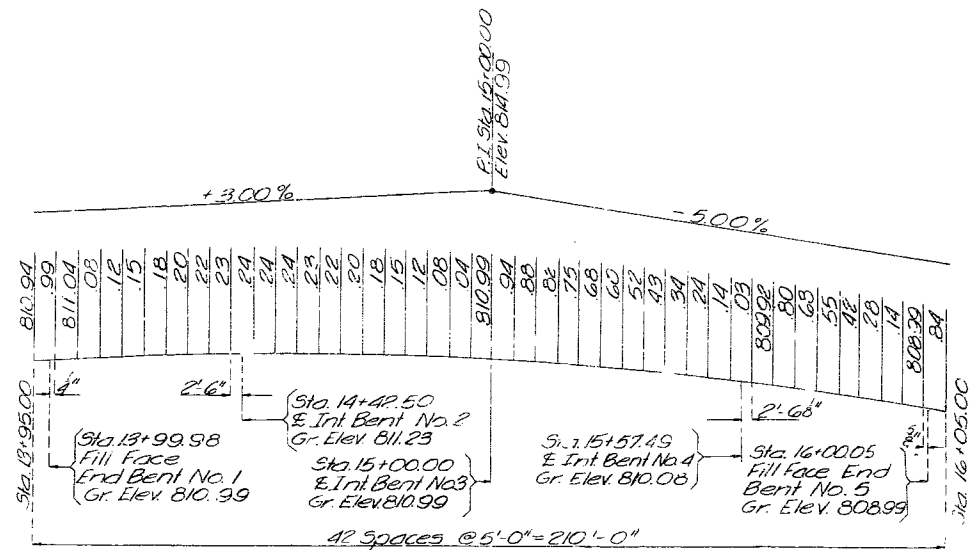
SECTION B-B



TYPICAL PLAN OF FOOTING
SHOWING REINFORCEMENT

Drawn June 1961 by O.J.S. & C.C.
Checked July 1961 by [Signature]

Note: This drawing is not to scale. Follow dimensions.



PROFILE GRADE ELEVATIONS

BRIDGE: RELOCATED COUNTY ROAD UNDERPASS

STATE ROAD FROM EAST OF ROUTE 65 TO COOPER CO. LINE
ABOUT 11.0 MILES S.W. OF BLACKWATER

PROJECT NO. I-70-2(10) (RTE. I-70) STA. 1010+50

SALINE COUNTY

Sheet No. 4A of 4

FINAL PLANS

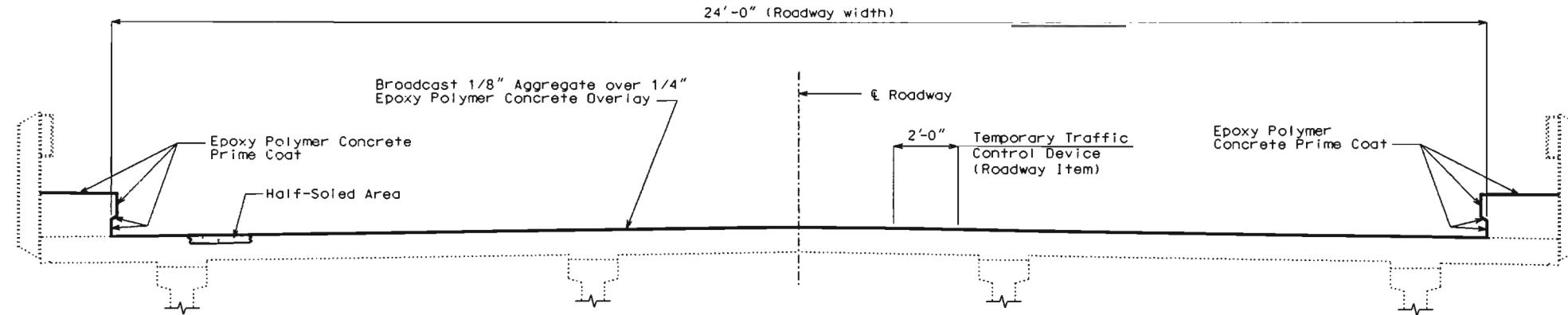
A-130

256

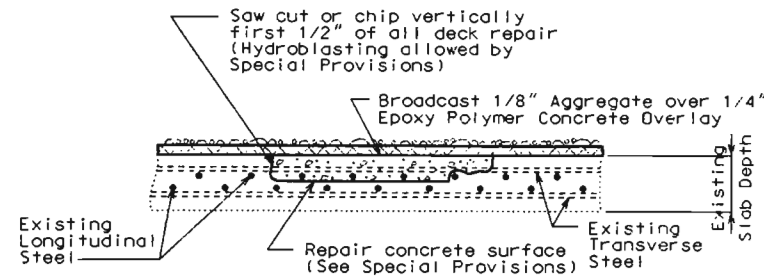
MISSOURI HIGHWAY AND TRANSPORTATION COMMISSION

State	Proj. No.	Sheet No.
MO		856
Sec./Sur. 7 Twp. 48N Rge. 20W		

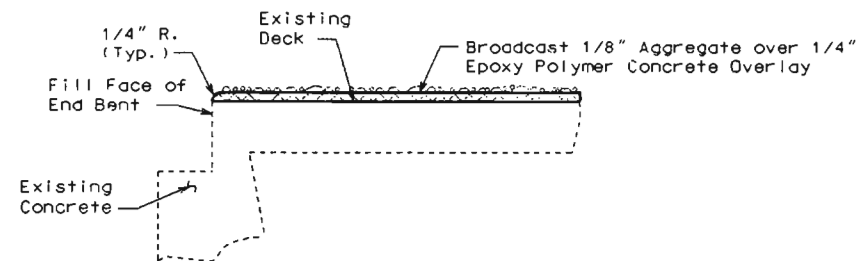
U.I.P. (40'-55'-55'-40') Prestressed Conc. Girder Spans



SECTION THRU SLAB



HALF-SOLED AREA



EPOXY POLYMER CONCRETE WEARING SURFACE AT FILL FACES OF BRIDGE

ESTIMATED QUANTITIES		
ITEM	UNIT	TOTAL
Repairing Concrete Deck (Half-Soling)	sq. foot	150
Epoxy Polymer Concrete Overlay	sq. yard	540

General Notes:

Design Specifications:

AASHTO 1996 and Interims thru 1999.

Dimensions:

Drawings are not to scale. Follow dimensions.

Contractor shall verify dimensions in field before ordering materials.

Miscellaneous:

Traffic over structure to be maintained during construction. (See roadway plans for traffic control).

Outline of old work is indicated by dashed lines. Heavy lines indicate new work.

In order to maintain grade and a minimum thickness of overlay as shown on plans it may be necessary to use additional quantities of overlay at various locations throughout the structure.

No payment will be allowed for additional labor, materials or equipment for variations in thickness of overlay.

Roadway surfacing adjacent to bridge ends to match bridge overlay (Roadway Item).

The contractor shall exercise care to ensure spillage over joint edges is prevented and that a neat line is obtained along any terminating edge of the epoxy polymer concrete.

REPAIRS TO BRIDGE OVER I-70

STATE ROAD FROM ROUTE 65 TO ROUTE J

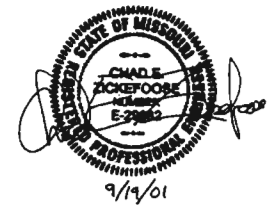
ABOUT 3.0 MILES W. OF ROUTE J

PROJECT NO.

STA. 1010+50.00± (Match Ex1st.)

JOB. NO. J2P0698B

RTE. I-70



SALINE

COUNTY

A01301

Designed Aug. 2001
Detailed Aug. 2001
Checked Aug. 2001