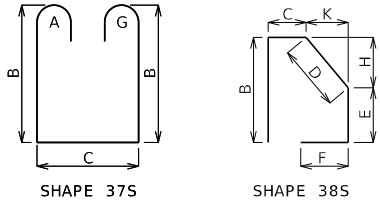
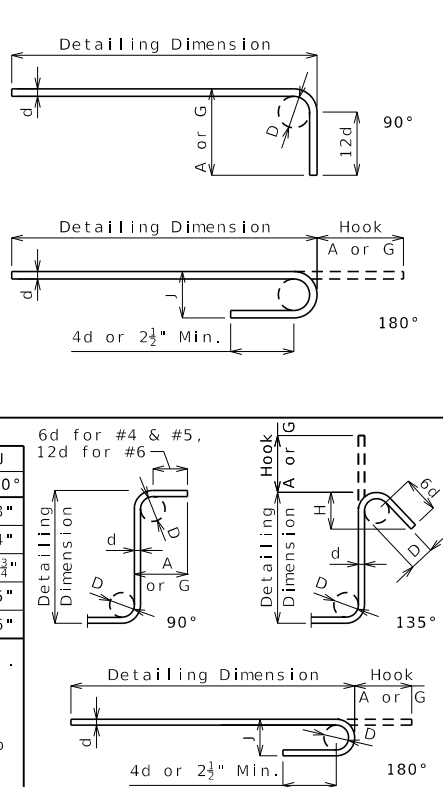


Finished Bend Dimensions D and Hook Dimensions						
Standard Pin Bend Shapes						
Size	Case	D	A or G			J
			90°	180°	180°	
#4	1	3"	8"	6"	4"	
#5	1	3 3/4"	10"	7"	5"	
#6	1	4 1/2"	12"	8 1/4"	6"	
#7	2	5 1/4"	14"	9 3/4"	7"	
	3	7"	15"	11 1/4"	8 3/4"	
#8	2	6"	16"	11"	8"	
	3	8"	17"	13 1/4"	10"	
#9	1	9 1/2"	19 1/2"	15 1/2"	11 3/4"	
#10	1	10 3/4"	22"	17 1/2"	13 1/4"	
#11	1	12"	24 1/2"	19 1/2"	14 7/8"	
#14	1	18 1/4"	31 1/4"	27 1/4"	21 3/8"	
#18	1	24"	41 1/2"	36 1/2"	28 1/2"	
Stirrup Pin Bend Shapes (S)						
Size	Case	D	A or G		H	J
			90°	135°	180°	135°
#4	2	2"	4 1/2"	4 1/2"	5"	2 5/8"
	3	3"	5"	5 1/4"	6"	3"
#5	2	2 1/2"	5 3/4"	5 3/4"	5 3/4"	3 5/8"
	3	3 3/4"	6 1/4"	6 1/4"	7"	3 5/8"
#6	1	4 1/2"	12"	7 3/4"	8 1/4"	4 3/8"
Applicable for all grades of steel. Case 1 applies to all reinforcement. Case 2 applies to all reinforcement except for galvanized bars. Case 3 applies to galvanized bars only.						



BENDING DIAGRAMS

All dimensions are out to out. (1) Shall be a deformed or plain spiral bar or wire.

Shapes ending with an S shall be bent in accordance with stirrup pin bend shapes.

Unless otherwise noted, finished bending diameter D is the same for all bends of a shape.

Four angle or channel spacers are required for each column spiral. Spacers are to be placed on inside of spirals. Length and weight of column spirals do not include splices or spacers.

Reinforcing Steel Totals (Pounds)							
Size	Substructure		Superstructure			Entire Bridge	
	Plain	Epoxy	Slab	Barrier	Slip Form	Plain	Epoxy
W5	0	0	0	0	0	0	0
4	0	0	0	0	0	0	0
5	0	0	0	473	0	0	473
6	0	0	0	0	0	0	0
7	0	0	0	0	0	0	0
8	0	0	0	0	0	0	0
9	0	0	0	0	0	0	0
10	0	0	0	0	0	0	0
11	0	0	0	0	0	0	0
14	0	0	0	0	0	0	0
18	0	0	0	0	0	0	0
By Type	0	0	0	473	0	0	473

All superstructure reinforcing steel shall be epoxy coated unless otherwise specified.

Detailed  
Checked

BENDING DIAGRAMS AND REINFORCING STEEL TOTALS

Note: This drawing is not to scale. Follow dimensions.

Sheet No. 2 of 3

DATE PREPARED  
4/19/2024

ROUTE  
BR

DISTRICT  
BR

STATE  
MO

SHEET NO.  
5

COUNTY

JOB NO.

CONTRACT ID.

PROJECT NO.

BRIDGE NO.

DESCRIPTION

DATE

MISSOURI HIGHWAYS AND TRANSPORTATION COMMISSION

105 WEST CAPITOL  
JEFFERSON CITY, MO 65102  
1-888-ASK-MODOT (1-888-275-6636)