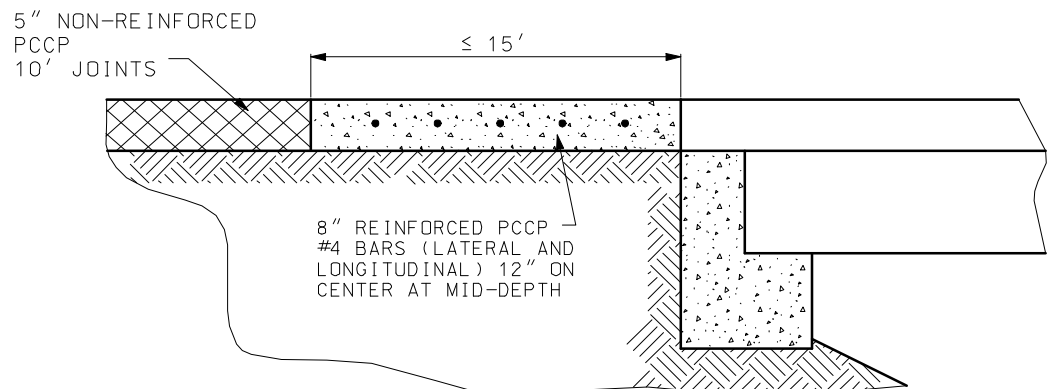
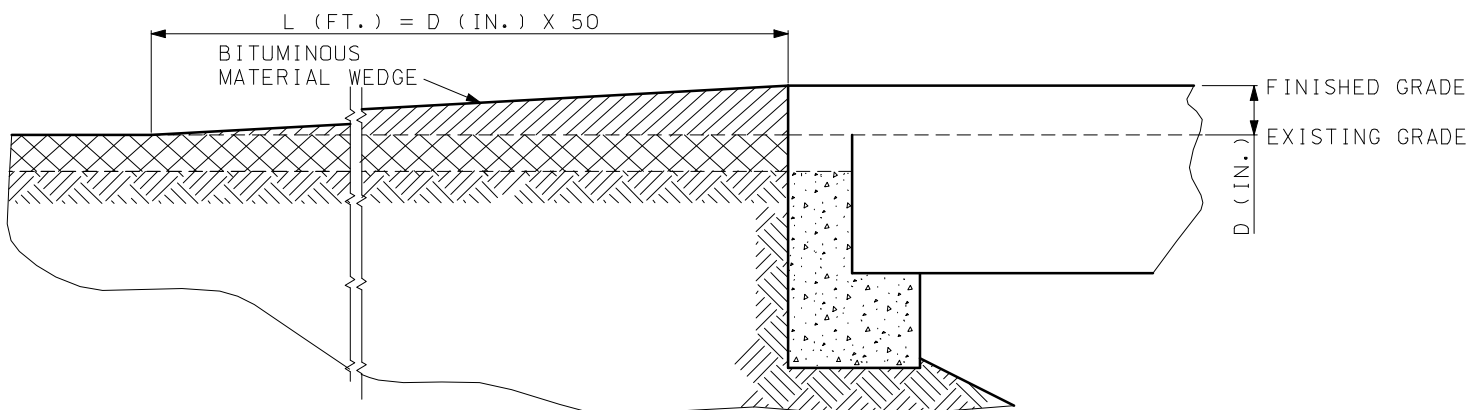


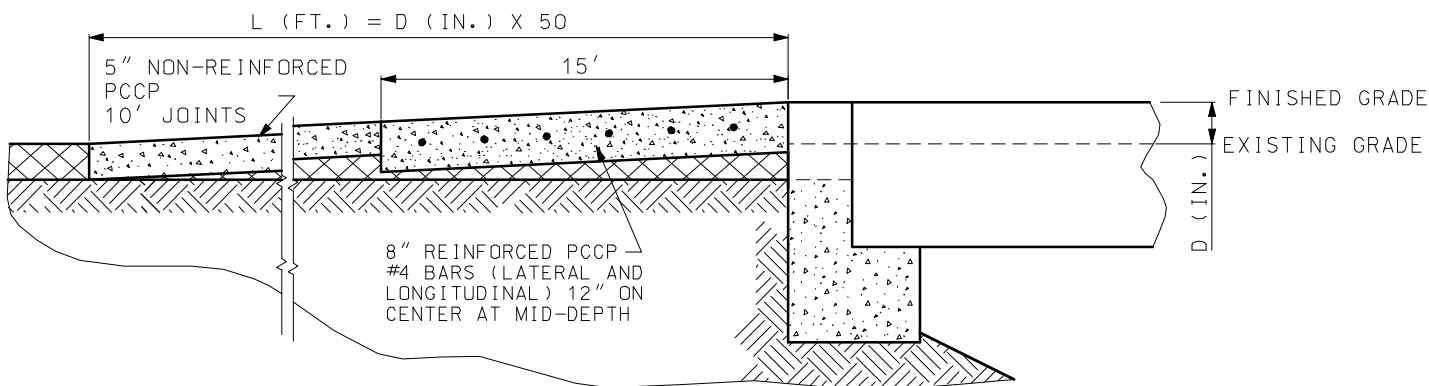
ASPHALT OPTION



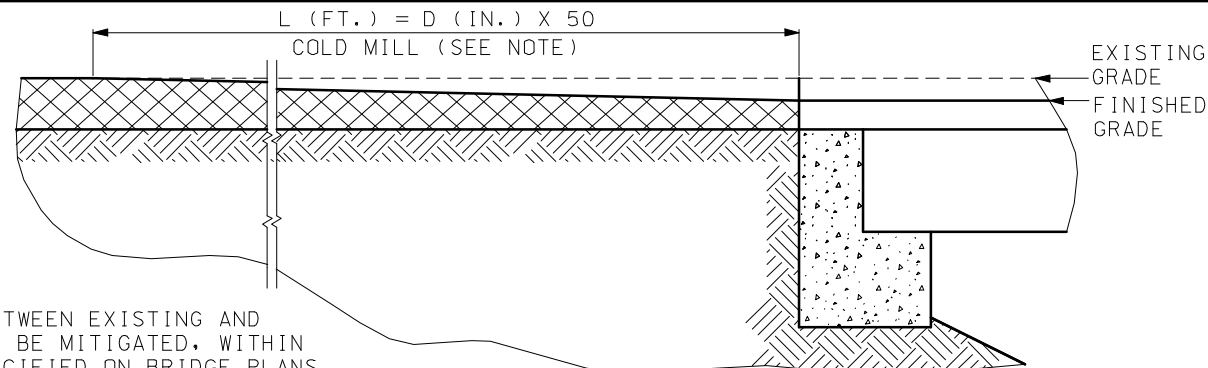
CONCRETE OPTION  
PAVEMENT REPLACEMENT ON EXISTING GRADE



ASPHALT OPTION



CONCRETE OPTION  
PAVEMENT REPLACEMENT FOR HIGHER GRADE

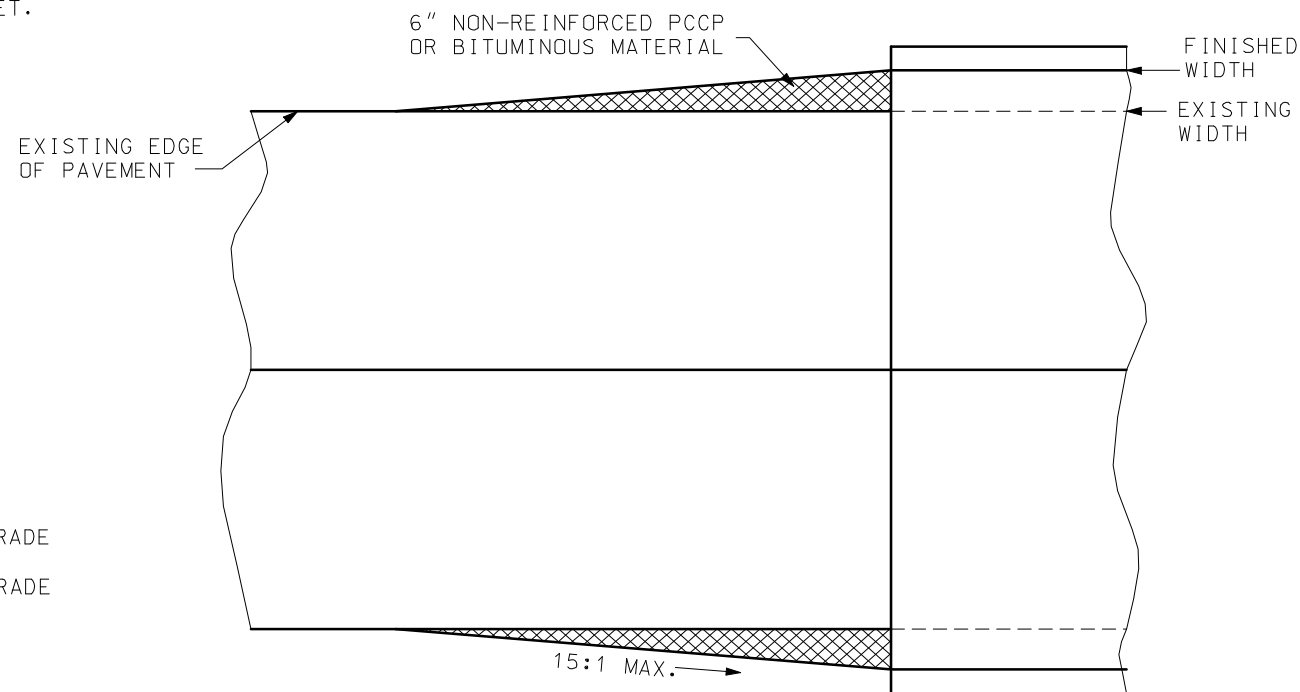


DEPTH TRANSITION FOR LOWER GRADE

NOTES:

SMALL VARIANCES BETWEEN EXISTING AND FINISHED GRADE MAY BE MITIGATED, WITHIN THE PARAMETERS SPECIFIED ON BRIDGE PLANS, BY ADJUSTMENT OF THE HAUNCH.

IF THE MILLING OPERATION RESULTS IN A FINISHED THICKNESS OF EXISTING PAVEMENT LESS THAN 5 3/4", THE PAVEMENT SHALL BE REPLACED ACCORDING TO THE DETAILS ON THIS SHEET.



WIDTH TRANSITION FOR WIDER STRUCTURE

GENERAL NOTES:

FIELD CONDITIONS MAY REQUIRE REFERENCE TO A COMBINATION OF THE DETAILS SHOWN ON THIS SHEET.

SEE STANDARD PLAN 502.05 FOR JOINT AND TIE BAR DETAILS OF NON-REINFORCED PCCP.

PAVEMENT TRANSITION AT BRIDGE ENDS

SPECIAL SHEET

"THIS MEDIA SHOULD NOT BE CONSIDERED A CERTIFIED DOCUMENT."  
 DATE PREPARED: 12/18/2008  
 ROUTE: STATE: MO  
 DISTRICT: SHEET NO.:  
 COUNTY:  
 JOB NO.:  
 CONTRACT ID.:  
 PROJECT NO.:  
 BRIDGE NO.:  
 DESCRIPTION:  
 DATE:  
 MISSOURI HIGHWAYS AND TRANSPORTATION COMMISSION  
 MoDOT  
 105 WEST CAPITOL JEFFERSON CITY, MO 65102  
 1-888-ASK-MODOT (1-888-275-6636)