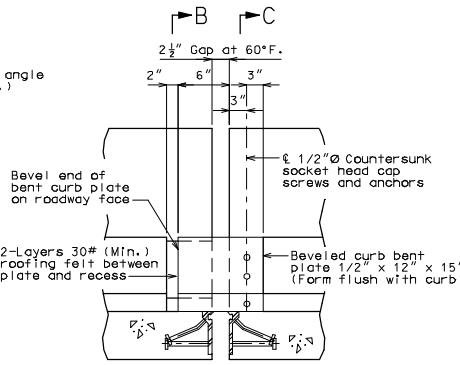
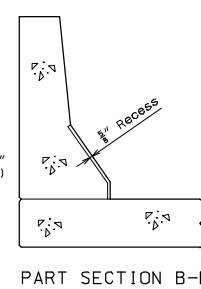


Note: Strip seal gland not shown for clarity.

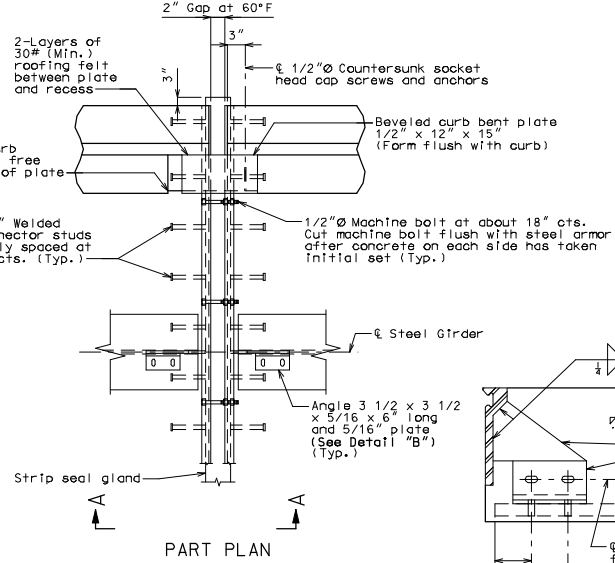
SECTION A-A



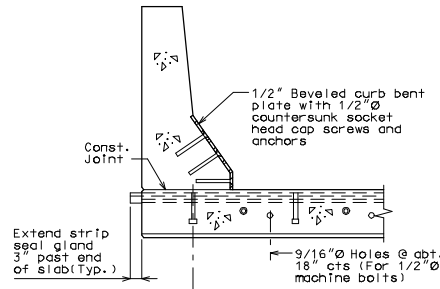
PART ELEVATION OF BARRIER CURB



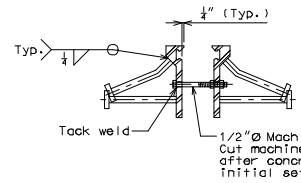
PART SECTION B-B



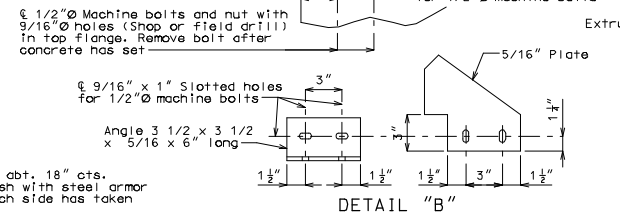
PART PLAN



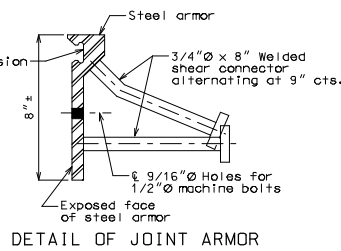
PART SECTION C-C



DETAIL "A"

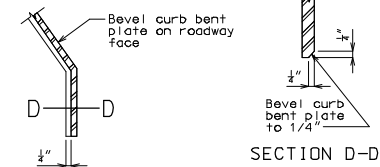


DETAIL "B"



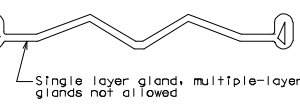
DETAIL OF JOINT ARMOR

PART ELEVATION AT END OF BEVELED CURB BENT PLATE



SECTION D-D

GENERAL NOTES:
 Expansion joint system shall be fabricated in one section, except for stage construction and when the length is over 50 feet. A complete joint penetration groove welded splice shall be required. Welds shall be ground flush to provide a smooth surface. The expansion joint system shall be fabricated and installed to the crown and grade of the roadway.
 The strip seal gland shall be installed in joints in one continuous piece without field splices. Factory splicing will be permitted for joints in excess of 53 feet.
 Structural steel for the expansion joint system shall be ASTM A709 Grade 36 except the steel armor may be ASTM A709 Grade 50W. Anchors for the expansion joint system shall be in accordance with Sec 1037. Strip seal expansion joint system shall be in accordance with Sec 717.
 Structural steel for the expansion joint system and curb plate shall be coated with a minimum of two coats of inorganic zinc primer (5 mils minimum) or galvanized in accordance with ASTM A123. Anchors need not be protected from overspray.
 Plan dimensions are based on installation at 60°F. The expansion gap and other dimensions shall be increased or decreased for each 10° fall or rise in temperature at installation.
 Longitudinal reinforcing steel shall be placed so that ends shall not be more than 21" from vertical leg of the steel armor at the expansion joint system.
 Concrete shall be forced under and around steel armor and anchors. Proper consolidation of the concrete shall be achieved by localized internal vibration.
 Curb plate anchors shall be a drilled cone expansion or a cast-in-place wing type threaded insert. The minimum ultimate pullout capacity for these anchors shall be 2700 lbs in f'c = 4000 psi concrete. Lead anchors will not be permitted. Holes in the barrier curb for anchors shall not be drilled until the concrete is at least 7 days old.



DETAIL OF GLAND

DETAILS OF STRIP SEAL AT INTERMEDIATE BENT NO.

Note: This drawing is not to scale. Follow dimensions. Sheet No. of

DATE PREPARED 04/07/2009		COUNTY *		JOB NO. *		CONTRACT ID.		PROJECT NO. STS24		BRIDGE NO. STS24	
ROUTE *		STATE MO		SHEET NO. *		CONTRACT ID.		PROJECT NO. STS24		BRIDGE NO. STS24	
DISTRICT BR		STATE MO		SHEET NO. *		CONTRACT ID.		PROJECT NO. STS24		BRIDGE NO. STS24	
MISSOURI HIGHWAYS AND TRANSPORTATION COMMISSION 105 WEST CAPITOL JEFFERSON CITY, MO 65102 1-888-ASK-MODOT (1-888-275-6636)											

Detailed Checked