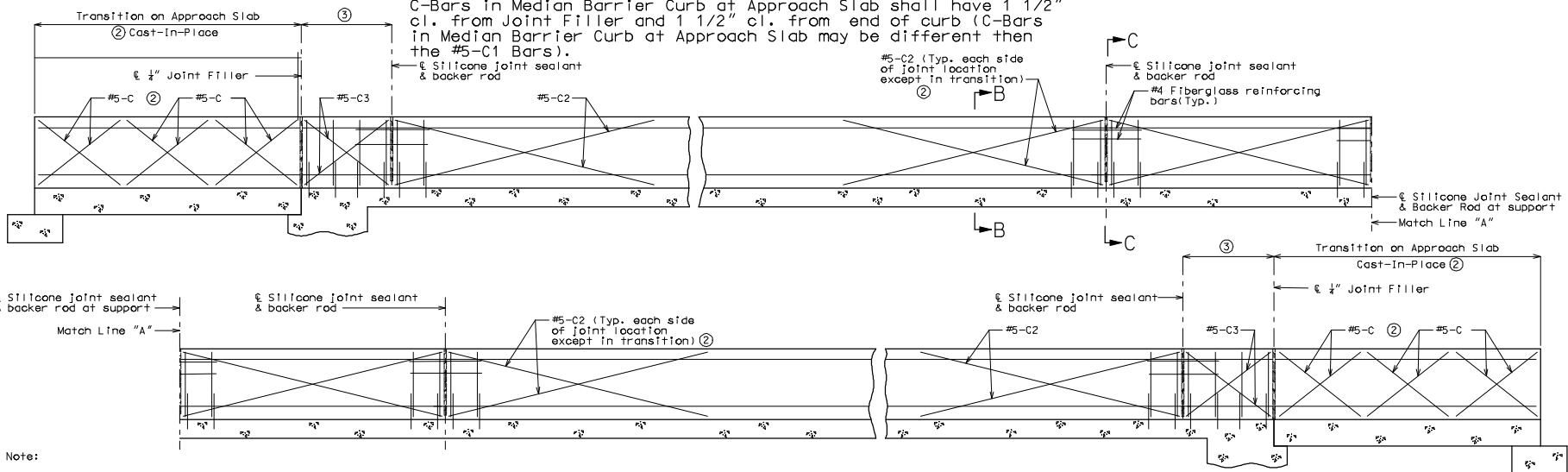
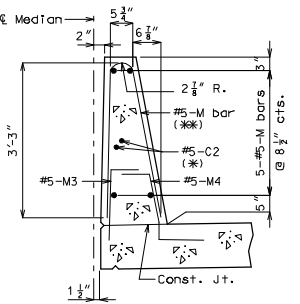


**NOTE TO DETAILER:**  
 C-Bars in Median Barrier Curb at Approach Slab shall have 1 1/2" cl. from Joint Filler and 1 1/2" cl. from end of curb (C-Bars in Median Barrier Curb at Approach Slab may be different than the #5-C1 Bars).



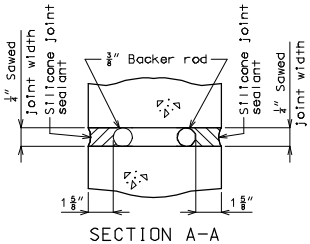
**Note:**  
 Concrete in the barrier curb (Type D) shall be Class B-1.  
 Top of median barrier curb (Type D) shall be built parallel to grade with barrier curb joints (except at end bent) normal to grade.  
 Payment for all concrete and reinforcement, complete-in-place will be considered completely covered by the contract unit price for barrier curb (Type D) per linear foot.  
 Measurement of safety barrier curb (Type D) is to the nearest linear foot for each structure, measured along the outside top of slab from end of slab to end of slab to end of sleeper slab.



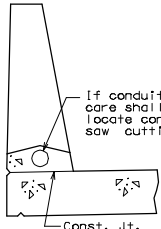
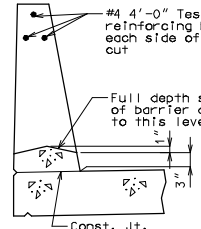
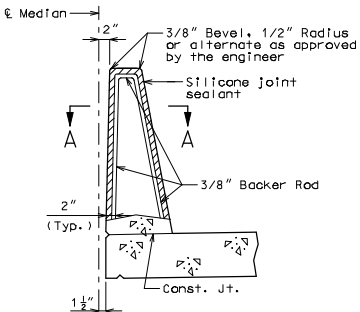
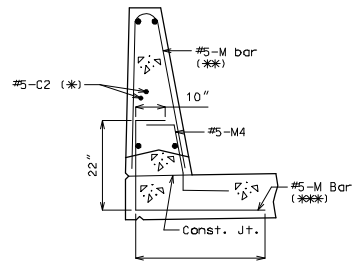
**Note:**  
 (\*) Each side of joint location, (except in transition), (2)  
 (\*\*\*) The M1 and M2 bar combination may be furnished as one bar, as shown, at the contractor's option. (All dimensions are out to out.)  
 (\*\*\*\*) The M3 bar and #5 bottom transverse slab bar in cantilever (P/S panels only) combination may be furnished as one bar as shown, at the contractor's option.

**Note:**  
 Joint sealant and backer rods shall be used on all slip-form barrier curbs instead of joint filler and shall be in accordance with Sec 717 for silicone joint sealant for saw cut and formed joints.  
 Plastic waterstop shall not be used with slip-form option.  
 C Bars (slip-form option only) shall be used in addition to cast-in-place conventional forming reinforcement for bridge barrier curb (Type D).  
 For Slip-Form Option, all sides of the barrier curb (Type D) shall have a vertically broomed finish and the curb top shall have a transversely broomed finish.  
 Concrete traffic barrier delineators shall be placed on top of the median barrier curb (Type D) as shown on Missouri Standard Plans 611.10 and in accordance with Sec 617. Concrete traffic barrier delineators will be considered completely covered by the contract unit price for Median Barrier Curb (Type D).  
 The curb shall be cured by application of Type 1-D or Type 2 Liquid Membrane-Forming Compound in accordance with Sec 1055. Surface sealing for concrete in accordance with Sec 703 is not required. Application of linseed oil at the contractor's expense is permitted.

**TYPICAL ELEVATION OF AT SUPPORT LOCATIONS**



**Note:**  
 Cast of silicone joint sealant and backer rod, complete-in-place, will be considered completely covered by the contract unit price for barrier curb (Type D).



**OPTIONAL SLIP-FORM BARRIER CURB (TYPE D) ①**

**Note:** This drawing is not to scale. Follow dimensions. Sheet No. of

"THIS MEDIA SHOULD NOT BE CONSIDERED A CERTIFIED DOCUMENT."  
 DATE PREPARED: 03/11/2009  
 ROUTE: \* STATE: MO  
 DISTRICT: BR SHEET NO.: \*  
 COUNTY: \*  
 JOB NO.: \*  
 CONTRACT ID.: \*  
 PROJECT NO.: \*  
 BRIDGE NO.: MBC02  
 MISSOURI HIGHWAYS AND TRANSPORTATION COMMISSION  
 105 WEST CAPITAL  
 JEFFERSON CITY, MO 65102  
 1-888-ASK-MODOT (1-888-275-6636)

Detailed Checked