

"THIS MEDIA SHOULD NOT BE CONSIDERED A CERTIFIED DOCUMENT."

DATE PREPARED
03/04/2009

ROUTE STATE

* MO

DISTRICT SHEET NO.

BR * *

COUNTY

* *

JOB NO.

* *

CONTRACT ID.

* *

PROJECT NO.

* *

BRIDGE NO.

BAN 18

DESCRIPTION

DATE

MISSOURI HIGHWAYS AND TRANSPORTATION COMMISSION

105 WEST CAPITOL

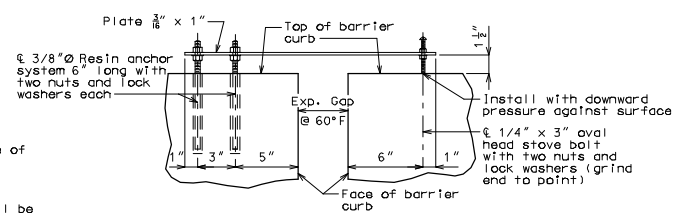
JEFFERSON CITY, MO 65102

1-888-ASK-MODOT (1-888-275-6636)

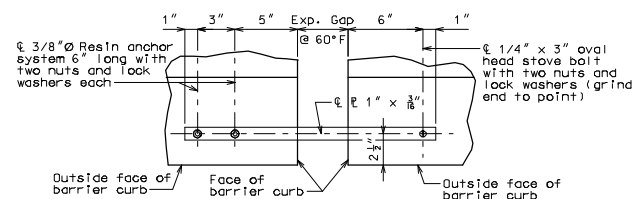
IF A SEAL IS PRESENT ON THIS SHEET IT HAS BEEN ELECTRONICALLY SEALED AND DATED.

Notes:
A movement gauge shall be provided on one side of bridge at all barrier curb expansion joints.
All steel shall be galvanized.

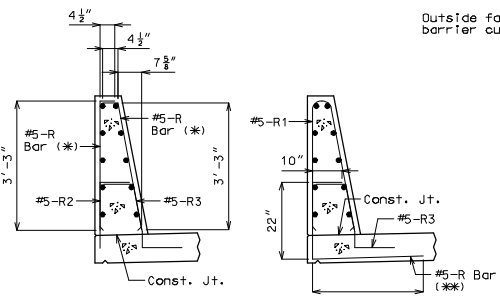
Cost of movement gauge, complete-in-place, will be considered completely covered by the contract unit price for Barrier Curb (Type D).



PART ELEVATION OF BARRIER CURB SHOWING MOVEMENT GAUGE



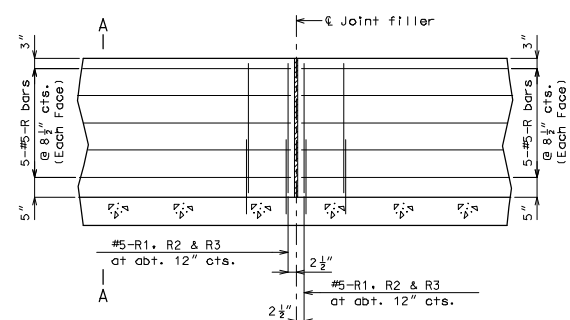
PART PLAN OF BARRIER CURB SHOWING MOVEMENT GAUGE



R-BAR PERMISSIBLE ALTERNATE SHAPE

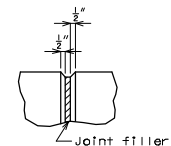
(*) The R1 bar may be separated into two bars as shown, at the contractor's option, only when slip forming is not used. (All dimensions are out to out.)

(**) The R2 bar and #5 bottom transverse slab bar in cantilever (P/S panels only) combination may be furnished as bar as shown, at the contractor's option.



PART SECTION NEAR LEFT BARRIER CURB (TYPE D) (CAST-IN-PLACE CONVENTIONAL FORMING OPTION)

Note: This drawing is not to scale. Follow dimensions. Sheet No. of



FILLED JOINT DETAIL

Notes:
Top of barrier curb (Type D) shall be built parallel to grade with barrier curb joints (except at end bents) normal to grade.

All exposed edges of barrier curb (Type D) shall have either a 1/2 inch radius or a 3/8 inch bevel, unless otherwise noted.

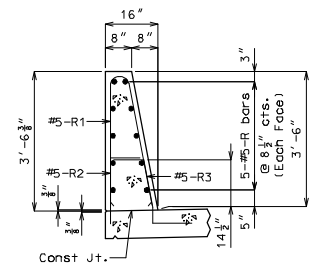
Payment for all concrete and reinforcement, complete-in-place, will be considered completely covered by the contract unit price for Barrier Curb (Type D) per linear foot.

Concrete in the barrier curb (Type D) shall be Class B-1.

Measurement of barrier curb (Type D) is to the nearest linear foot for each structure, measured along the outside top of slab from end of wing to end of wing.

Concrete traffic barrier delineators shall be placed on top of the safety barrier curb as shown on Missouri Standard Plans 617, 10 and in accordance with Sec 617. Concrete traffic barrier delineators will be considered completely covered by the contract unit price for "Barrier Curb (Type D)".

The curb shall be cured by application of Type 1-D or Type 2 Liquid Membrane-Forming Compound in accordance with Sec 1055. Surface sealing for concrete in accordance with Sec 703 is not required. Application of linseed oil at the contractor's expense is permitted.



PART SECTION A-A

Notes:
Use a minimum lap of 2'-11" for #5 horizontal barrier curb (Type D) bars.
The cross-sectional area above the slab is 3.52 sq. ft.

Detailed
Checked