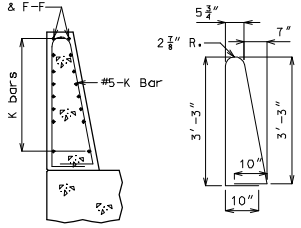


- ① 6-#5-K1 & 6-#5-K2 @ 4" cts.
- ② 4-#5-K5 & 4-#5-K6 @ 6" cts.
- ③ 3-#5-K7 & 3-#5-K8 @ 12" cts.
- ④ 6-#5-K11 @ 4" cts.

The top two K17 bars shall be kept with position close to those shown in Sections C-C & F-F



(Other K bars not shown for clarity)
K9-K10 BAR PERMISSIBLE ALTERNATE SHAPE (*)

(*) The K9 and K10 bar combination may be furnished as one bar as shown, at the contractor's option.

NOTES: Concrete traffic barrier delineators shall be placed on top of the safety barrier curb as shown on Missouri Standard Plans 617.10 and in accordance with Sec 617. Concrete traffic barrier delineators will be considered completely covered by the contract unit price for "Barrier Curb (Type D)".

DETAILS OF GUARD RAIL ATTACHMENT
DETAILS OF BARRIER CURB (TYPE D) AT END BENTS

(Left barrier curb shown; right barrier curb similar)

Note: This drawing is not to scale. Follow dimensions. Sheet No. of

THIS MEDIA SHOULD NOT BE CONSIDERED A CERTIFIED DOCUMENT.
 DATE PREPARED: 03/04/2009
 ROUTE: MO
 DISTRICT: BR SHEET NO.: *
 COUNTY: *
 JOB NO.: *
 CONTRACT ID.: *
 PROJECT NO.: *
 BRIDGE NO.: BAN17
 MISSOURI HIGHWAYS AND TRANSPORTATION COMMISSION
 105 WEST CAPITOL JEFFERSON CITY, MO 65102 1-888-ASK-MODOT (1-888-275-6636)