

"THIS MEDIA SHOULD NOT BE CONSIDERED A CERTIFIED DOCUMENT."

DATE PREPARED 07/28/2008	
ROUTE *	STATE MO
DISTRICT BR	SHEET NO. *
COUNTY	
JOB NO. *	
CONTRACT ID.	
PROJECT NO.	
BRIDGE NO. BAN 1	

DESCRIPTION	DATE

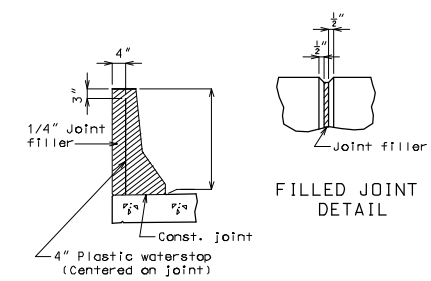
MISSOURI HIGHWAYS AND TRANSPORTATION COMMISSION

105 WEST CAPITOL JEFFERSON CITY, MO 65102 1-888-ASK-MODOT (1-888-275-6636)

Notes:
A movement gauge shall be provided on one side of bridge at all safety barrier curb expansion joints.
All steel shall be galvanized.

Cost of movement gauge, complete-in-place, will be considered completely covered by the contract unit price for Safety Barrier Curb.

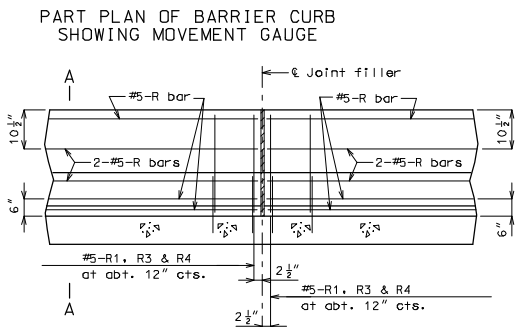
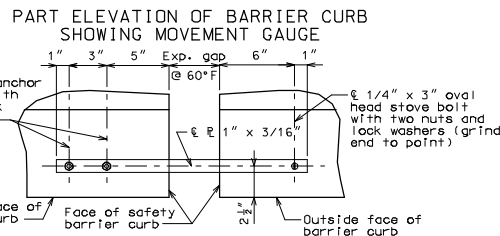
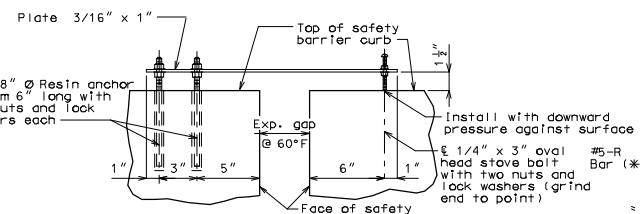
Concrete traffic barrier delineators shall be placed on top of the safety barrier curb as shown on Missouri Standard Plans 617.10 and in accordance with Sec 617. Concrete traffic barrier delineators will be considered completely covered by the contract unit price for "Safety Barrier Curb".



Notes:
Plastic waterstop shall be placed in all safety barrier curb filled joints, except structures with superelevation, use on all lower safety barrier curb joints only.

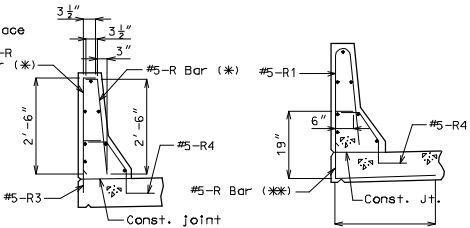
Cost of plastic waterstop, complete-in-place, will be considered completely covered by the contract unit price for Safety Barrier Curb.

Detailed Checked

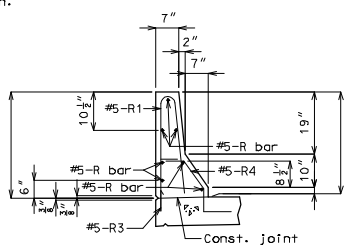


PART SECTION NEAR LEFT SAFETY BARRIER CURB (CAST-IN-PLACE CONVENTIONAL FORMING OPTION)

Note: This drawing is not to scale. Follow dimensions. Sheet No. of

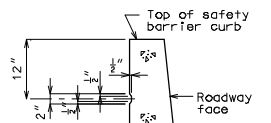


(*): The R1 bar may be separated into two bars as shown, at the contractor's option, only when slip forming is not used. (All dimensions are out to out.)
(**): The R3 bar and #5 bottom transverse slab bar in cantilever (P/S panels only) combination may be furnished as one bar as shown, at the contractor's option.

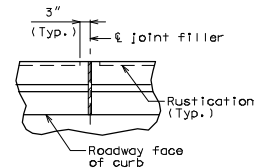


PART SECTION A-A

Notes:
Use a minimum lap of 2'-11" for #5 horizontal safety barrier curb bars.
The cross-sectional area above the slab = 2.28 sq. ft.



PART SECTION SHOWING RUSTICATION DETAILS



PART PLAN SHOWING SAFETY BARRIER CURB JOINT

Notes:
Top of safety barrier curb shall be built parallel to grade with barrier curb joints (except at end bents) normal to grade.
All exposed edges of safety barrier curb shall have either a 1/2" radius or a 3/8" bevel, unless otherwise noted.

Payment for all concrete and reinforcement, complete-in-place, will be considered completely covered by the contract unit price for safety barrier curb per linear foot.

Concrete in the safety barrier curb shall be Class B-1.

Measurement of safety barrier curb is to the nearest linear foot for each structure, measured along the outside top of slab from end of wing to end of wing.

The curb shall be cured by application of Type 1-D or Type 2 Liquid Membrane-Forming Compound in accordance with Sec 1055. Surface sealing for concrete in accordance with Sec 703 is not required. Application of linseed oil at the contractor's expense is permitted.