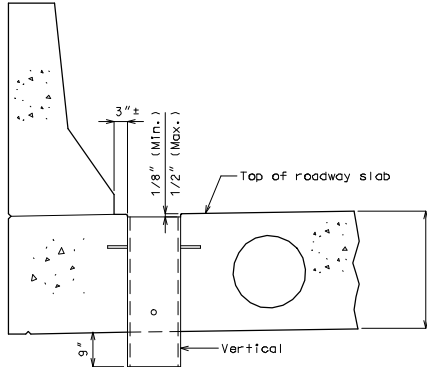
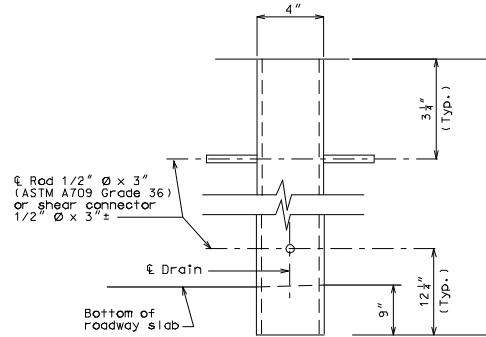


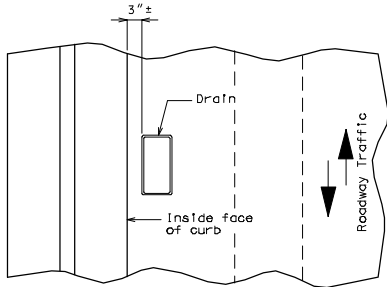
ROUTE	STATE	DISTRICT	SHEET NO.
	MO		
JOB NO.			
CONTRACT ID			
PROJECT NO.			
COUNTY			DATE



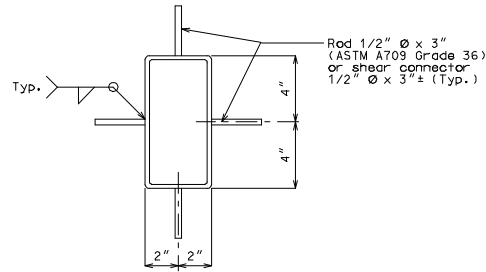
PART SECTION NEAR DRAIN



ELEVATION OF DRAIN



PART PLAN OF SLAB AT DRAIN



PLAN OF DRAIN

Notes:

- Slab drains may be fabricated of either 1/4" welded sheets of ASTM A709 Grade 36 steel or from 1/4" structural steel tubing ASTM A500 or A501.
- Slab drain bracket assembly shall be ASTM A709 Grade 36 steel.
- Outside dimensions of drains are 8" x 4".
- Locate drains in slab by dimensions shown in Part Section Near Drain.
- Shift reinforcing steel in field where necessary to clear drains.
- The drains shall be galvanized in accordance with ASTM A123.
- Shop drawings will not be required for the slab drains.

SLAB DRAIN DETAILS