

GENERAL NOTES:

Anchor rods for Type "E" bearings shall be ϕ ASTM F1554 Grade 55 swaged rods and shall extend into the concrete with AASHTO M291 (ASTM A563) Grade A Hex or Heavy Hex nuts. Actual manufacturer's certified mill test reports (chemical and mechanical) shall be provided. Use ASTM F436 hardened washers for the fixed bearings and no heavy hexagon nuts or hardened washers for the expansion bearings. Swedging shall be 1" less than extension into the concrete.

Anchor rods, hardened washers and heavy hexagon nuts shall be coated with a minimum of two coats of inorganic zinc primer (5 mils minimum).

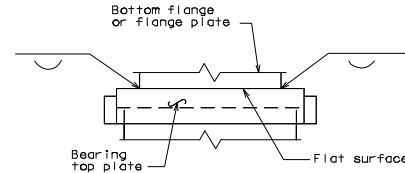
Weight of the anchor rods, hardened washers and heavy hexagon nuts for bearings are included in the weight of the Fabricated Structural Steel.

" ϕ " indicates machine finish surface.

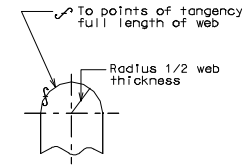
① Bonded lubricant

A lubricant coating shall be applied in the shop to both mating surfaces of the bearing assembly. The lubricant, method of cleaning, and application shall meet the requirements of MIL-L-23398 and MIL-L-46147. The coated areas shall be protected for shipping and erection.

Shop drawings are not required for the lead plates and the preformed fabric pads.

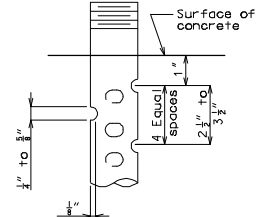


WELDING DETAILS

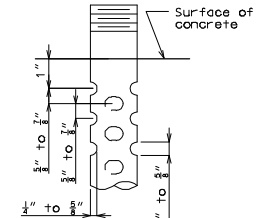


END VIEW OF WEB

ROUTE	STATE	DISTRICT	SHEET NO.	"THIS MEDIA SHOULD NOT BE CONSIDERED A CERTIFIED DOCUMENT." DATE _____
JOB NO.	MO			
CONTRACT ID.				
PROJECT NO.				
COUNTY				

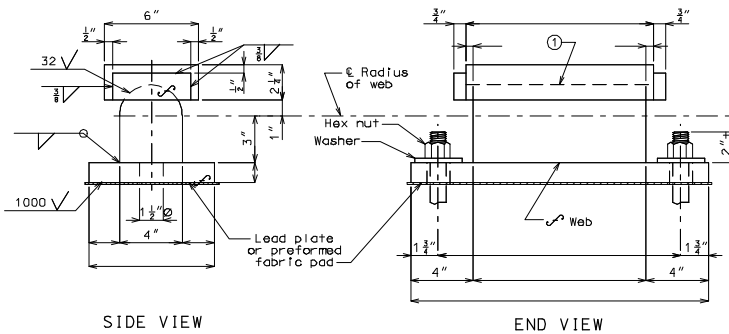


DETAIL FOR 3/4" ϕ THRU 2 1/2" ϕ ANCHOR RODS



OPTIONAL DETAIL FOR 1 3/8" ϕ THRU 2 1/2" ϕ ANCHOR RODS

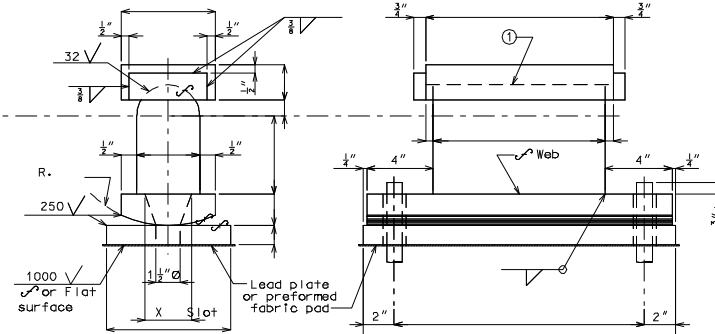
SWEDGE ANCHOR ROD DETAILS



SIDE VIEW

END VIEW

FIXED
Number Required:



SIDE VIEW

END VIEW

EXPANSION
Number Required:

TYPE "E" BEARINGS

(Estimated Weight pounds)

IF A SEAL IS PRESENT ON THIS SHEET IT HAS BEEN ELECTRONICALLY SEALED AND DATED.