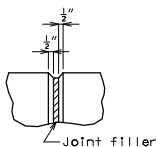
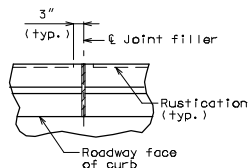


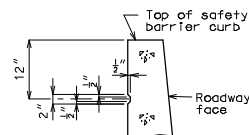
ROUTE	STATE	DISTRICT	SHEET NO.
	MO		
JOB NO.			
CONTRACT ID			
PROJECT NO.			
COUNTY	DATE		



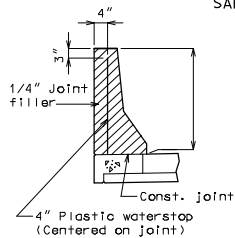
FILLED JOINT DETAIL



PART PLAN SHOWING SAFETY BARRIER CURB JOINT



PART SECTION SHOWING RUSTICATION DETAILS

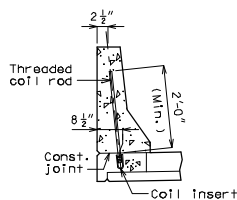


Note: Plastic waterstop shall be placed in all safety barrier curb filled joints, except structures with superelevation, use on all lower safety barrier curb joints only.

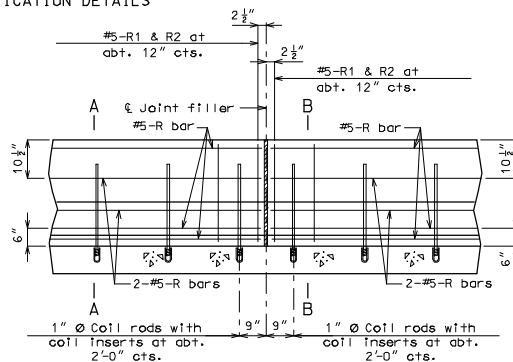
Cost of plastic waterstop, complete-in-place, will be considered completely covered by the contract unit price for Safety Barrier Curb.

DETAILS OF PLASTIC WATERSTOP

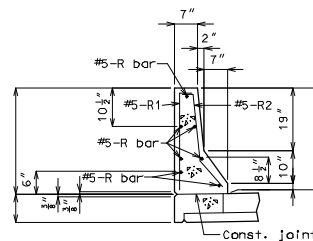
Detailed
Checked



PART SECTION A-A



PART SECTION NEAR LEFT SAFETY BARRIER CURB (CAST-IN-PLACE CONVENTIONAL FORMING OPTION)



PART SECTION B-B

Note: Use a minimum lap of 2'-11" for #5 horizontal safety barrier curb bars.

The cross-sectional area above the slab = 2.28 sq. ft.

Notes:

Top of safety barrier curb shall be built parallel to grade with barrier curb joints (except at end bents) normal to grade.

All exposed edges of safety barrier curb shall have either a 1/2" radius or a 3/8" bevel, unless otherwise noted.

Payment for all concrete and reinforcement, complete-in-place, will be considered completely covered by the contract unit price for safety barrier curb per liner foot.

Concrete in the safety barrier curb shall be Class B-1.

Measurement of safety barrier curb is to the nearest linear foot for each structure, measured along the outside top of slab from end of wing to end of wing.

Coil inserts shall have a concrete ultimate pullout strength of not less than 36,000 pounds in 5,000 psi concrete and an ultimate tensile strength of not less than 36,000 pounds.

Threaded coil rods shall have an ultimate capacity of 36,000 pounds. All coil inserts and threaded coil rods shall be galvanized in accordance with ASTM A153.

Payment for furnishing and installing coil inserts and threaded coil rods will be considered completely covered by the contract unit price for Safety Barrier Curb.

Concrete traffic barrier delineators shall be placed on top of the safety barrier curb as shown on Missouri Standard Plans 617.10 and in accordance with Sec 617. Concrete traffic barrier delineators will be considered completely covered by the contract unit price for Safety Barrier Curb.

The curb shall be cured by application of Type 1-D or Type 2 Liquid Membrane-Forming Compound in accordance with Sec 1055. Surface sealing for concrete in accordance with Sec 703 is not required. Application of linseed oil at the contractor's expense is permitted.

Note: This drawing is not to scale. Follow dimensions.

Sheet No. of

BAN 7